



Opportunities for Plant Scientists within European Structural and Investment Funds (ESIF), focus on the European Regional Development Fund (ERDF)

Brussels, 10.07.2017

Contents	Page
1. Introduction	
1.1 Introduction to European Structural and Investment Funds (ESIF)	2
1.2 How the ESIF budget is allocated	4
1.3 Financial Support	4
1.4 Life-cycle of a European Regional Development Fund (ERDF)/European Social Fund Project (ESF)	5
2. European Regional Development Fund (ERDF) and Synergies with H2020	
2.1 Introduction to the European Regional Development Fund (ERDF)	7
2.2 ERDF Funds are distributed through Operational Programmes	8
2.3 Smart Specialisation Strategy – Requirement to support R&D under ERDF	8
2.3.1 Smart Specialisation Platform for Agri-Food (S3P Agri-Food)	9
2.4 Synergies with Horizon 2020	9
2.4.1 Examples of Synergistic Activities Funded through the ERDF	10
2.4.2 Seal of Excellence extended to Marie Curie Actions (MSCA) projects	11
2.4.3 Challenges and Future Perspectives for synergies between ESIF and H2020	11
3. European Social Fund (ESF)	12
4. References	13
5. Annex: List of ERDF National and Regional Contacts, links to Operational Programmes and links to ERDF and ESF Operational Programmes, and Rural Development Programmes	14

1. Introduction

1.1 Introduction to European Structural and Investment Funds (ESIF)

EU funds for research and innovation (R&I) are provided through a set of programmes under the umbrella of the Multiannual Financial Framework (MFF). The current MFF runs from 2014 to 2020 and includes:

- Horizon 2020, the largest programme for R&I, covering all research fields and fully dedicated to funding R&I activities. EPSO provides a [full briefing](#) detailing opportunities for plant scientists when each new Work Programme is published. Horizon 2020 is centrally managed at the EU level.
- Sectoral R&I programmes; nuclear energy (Euratom), coal and steel (RFCS), and space
- European Structural and Investment Funds (ESIF), implemented at *national & regional level*. This is the focus of this briefing.
- These programmes are complemented by five other EU programmes not funding R&I activities directly, but connected to them; LIFE ([EPSO Briefing](#)), Erasmus+ ([EPSO Briefing](#)), Health, COSME, and Connect Europe Facility.

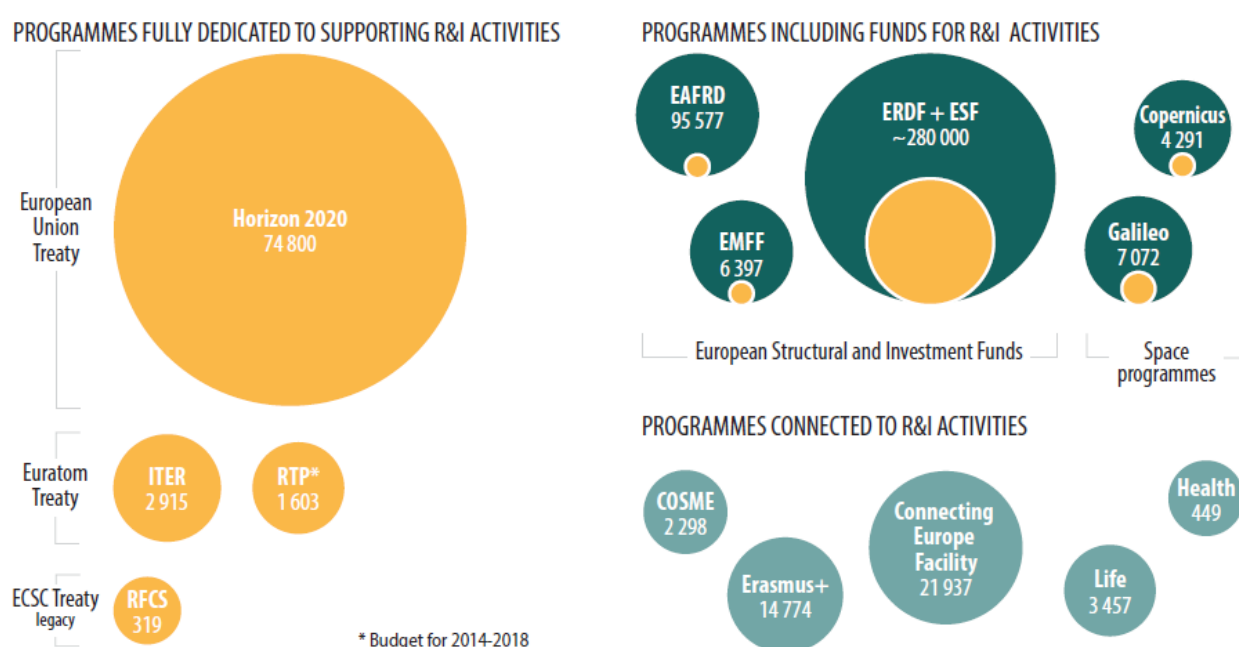


Figure 1. Overview of EU programmes funding or connected to R&I activities (orange) and their respective budgets (in million euros). Source: [Overview of EU Funds for research and innovation](#), European Parliament, 09.2015

Probably the best known source of funding for plant scientists is Horizon 2020 and its predecessor Framework Programmes, which have seen a steady increase in the budget over recent years; the budget of Horizon 2020 programme is currently nearly [€80 billion](#). There has also been an increase in funding for research and innovation activities in ESIF, which is estimated to represent a [total of €65,755,058,159](#). Overall the ESIF makes up more than one third of the EU's budget, €366.9 billion for 2014-2020.

Horizon 2020 and ESIF have different aims, budgets, instruments, eligibility criteria and implementation procedures.

ESIF aims to reduce differences in the varying levels of development between regions in Europe. They are therefore implemented at *national & regional level*, with broad themes and priorities defined at the European level. ESIF is applied throughout the EU, although the least developed regions and Member States are prioritized.

Horizon 2020	European Structural and Investment Funds
DIFFERENCES:	
Non-territorial , mainly transnational approach based on excellence; Horizon 2020 does not take into account geographic specificities in allocating funding.	Place-based approach supporting economic and social cohesion
Focus on individual R&I projects tackling the whole cycle of innovation, taking into account strategic approaches at EU level, e.g. through European Innovation Partnerships and the Strategic Energy Technology plan (although some programme co-funding for research coordination like ERA-NETs, etc.)	Largely focused on improving the R&I capacities and R&I eco-systems with the objective of regional growth and place-based economic transformation towards higher added value and more knowledge-intensive activities (smart specialisation strategies).
Centrally managed (EC) and awarded directly to final beneficiaries or managed by a multi-country entity; In the case of Erasmus+, partially decentralised and awarded through National Agencies	Shared management with national and regional public intermediaries (managing authorities, implementing agencies and intermediate bodies) which define the implementation details and allocate the funding to final beneficiaries
Competitive calls for proposals addressed to international groupings (including beyond the EU) without geographic pre-allocation. (European Research Council and Marie Skłodowska-Curie as well as Erasmus+ actions for learning mobility also address individuals)	Policy-related prioritisation based on cohesion considerations and RIS3 priorities with allocation to individual firms/bodies and consortia within the territory covered by the operational programme (and only within the EU). Use of competitive attribution through calls and aid schemes based on project selection criteria is also increasingly used (depending on MS).

Figure 2. Differences between Horizon 2020 & ESIF. Source: [Presentation](#) of Katja Reppel, DG REGIO

ESIF is divided into the following five main funds, four of which support R&I:

- The European Regional Development Fund (ERDF/Regional)
 - The most relevant for EPSO members. The largest of the ESIFs, aims to correct economic and social imbalances between EU regions. The budget for the 2014-2020 period is €196 billion, containing up to €61.5 billion dedicated to the theme of R&I, 93.5% of the total for R&I within ESIF.
 - The ERDF/Regional focuses its investments on four key priority areas:
 - innovation and research;
 - the digital agenda;
 - support for SMEs;
 - the low-carbon economy.
- European Agricultural Fund for Rural Development (EAFRD/Agriculture)
 - Managed under the Common Agricultural Policy (CAP), it supports Rural Development. €4.2 billion euros is dedicated to R&I. It mainly achieves this through the [European Innovation Partnership for Agricultural productivity and Sustainability \(EIP-AGRI\)](#), for which EPSO has previously produced a comprehensive [briefing](#). This includes Operational Group, linking farmers, extension services, scientists, and companies.
- The European Social Fund (ESF/Social)
 - The EU's main programme for supporting jobs. It has relevance for EPSO members through opportunities for higher education institutions. The ESF supports postgraduate studies, training of researchers, networking activities and partnerships between higher education institutions, research institutes and enterprises.
- European Maritime and Fisheries Fund (EMFF/Maritime)
 - The EMFF supports action to connect fisheries and R&I stakeholders. One of the main tools supported by the EMFF is the European Marine Observation and Data Network ([EMODnet](#)); a consortium of organisations, including research institutions gathering and sharing marine data. The EMFF can also directly finance specific research studies to support the development of new policies in the field of fisheries management.
- The Cohesion Fund (CF)

- Invests in trans-European networks of transport infrastructure and key environmental infrastructure projects. It does not invest in research.

Each nation or region has significant autonomy in the distribution of these funds and each produces its own programmes, please contact your managing authority in your region to determine your own opportunities, a list is provided in the annex. In this document we will provide an overview of the programme and examples of funding within it.

1.2 How the ESIF budget is allocated – your arguments to use in an application

Although the ESIF is part of the general EU budget, they are allocated based on a system of shared responsibility between the Commission, the Member States and regional authorities.

Priorities are set out within national or regional multi-annual programmes. In practice, Member States may choose to emphasise different activities in different regions of the EU; eligibility therefore depends on the scope of the programme in each region or country.

At the beginning of each programming period, the Commission publishes guidelines that should be taken into account by all Member States. For the period of 2014-2020 a set of eleven thematic objectives (TO) were outlined. These include:

- strengthening research, technological development and innovation
- enhancing access to, and use and quality of, ICT
- promoting climate change adaptation, risk prevention and management
- preserving and protecting the environment and promoting resource efficiency

Member States then develop strategies with their investment priorities covering the five ESIF. These are called Partnership Agreements (PAs). Details of the objectives they intend to achieve with the available resources are given in national and/or regional Operational Programmes (OPs), or Rural Development Programmes (RDPs) for the EAFRD.

Once an OP has been approved by the Commission, it is up to the managing authorities appointed by each Member State to select the projects to be financed. This can be done through national or regional calls for proposals, flagship programmes or central programmes.

EPSO encourages all its members to become acquainted with their national and regional managing authorities in order to provide them with input and to keep abreast of forthcoming calls. A list of all managing authorities by country is available in the annex, compiled from the DG Regio website.

1.3 Financial Support

Financial support can be a number of incentives including grants, prizes, contracts, repayable assistance and financial instruments. (See examples of support for R&I through the ERDF/Regional in the next section).

The following general principles apply to funding projects:

- Co-financing rule: The EU only partly co-funds the project. Therefore, both the applicant and partners must have their own or third party financial resources to contribute to the costs of the project. The percentage of ESIF contribution is normally 50% (intervention rate) but this depends on various factors such as the added value of the funding and the category of region.
- Non-profit rule: the grant may not result in a profit being made. If it does, a financial gap analysis will be performed in order to assess the need for and potential grant amount.

- Non-retroactivity rule: co-funding is eligible only for the costs incurred after the starting date of the project set out in the grant agreement.
- Non-cumulative rule: only one grant is allowed per beneficiary. The non-cumulative award principle only applies to EU grants awarded to the same action and the same beneficiary under any type of management. It is therefore possible to combine the resources of the ESIF with other EU instruments. However, the non-cumulative award principle does not apply to Horizon 2020 funds and ESIF funds can therefore be allocated to the same project and same beneficiary. See the “Synergies with Horizon 2020” section.

Reimbursement rules:

- A single reimbursement rate applies, known as a ‘one project-one funding rate’
- A flat rate for indirect costs and other simplified cost options
- A 90-day payment deadline for beneficiaries
- Electronic exchange of data between beneficiaries and managing authorities was foreseen by 2016 across all EU-Member States

1.4 Life-cycle of ERDF/Regional and ESF/Social Projects

There is a standard lifecycle for ERDF/Regional and ESF/Social projects.

1. Routes into the programme: The standard route into the programme will be through a [Managing Authority](#) open call for applications. For some European Social Fund activity, the route in will be through an application from a cofinancing organisation, which will then competitively select delivery organisations;
2. Application: This involves the applicant submitting an Outline Application and then, if that is successful, a Full Application. The Managing Authority carries out an Assessment of the Outline Application and an Appraisal of the Full Application. If the application is successful at both stages, this leads to a Funding Agreement which specifies the terms of the funding;
3. Contract management: This involves the grant beneficiary (the successful applicant) implementing the project activity compliant with ESIF requirements, submitting claims to the Managing Authority for reimbursement, and filing reports on activity and achievements, and ensuring that there is a clear audit trail for all eligible activities. The Managing Authority will monitor the activity through checking claims, and conducting on-the-spot monitoring visits to ensure that all the expenditure is eligible within the rules of the European Structural and Investment Funds; and
4. Closure: The grant beneficiary completes the activity and all financial claims within the agreed period. The Managing Authority conducts checks that the activity has closed and all the records are accurate and in place, as audits can continue to take place for many years.

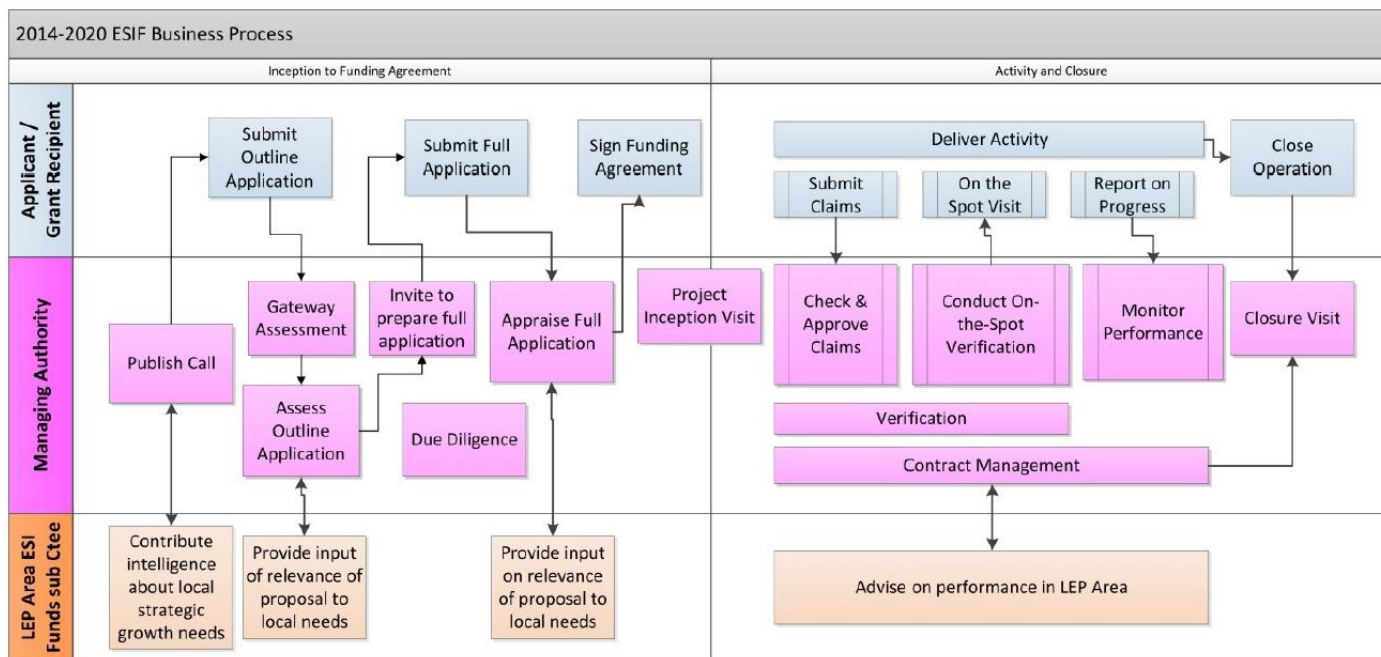


Figure 3. *Lifecycle of a Project, 2014-2020 European Structural and Investment Funds Growth Programme*,
 Source: UK Government, 06.2015

2. European Regional Development Fund (ERDF)/Regional and Synergies with Horizon 2020

2.1 Introduction to the European Regional Development Fund (ERDF)/Regional

The ERDF/Regional, the largest of the ESIFs, aims to correct economic and social imbalances between EU regions. The ERDF/Regional budget for the 2014-2020 period amounts to €196 billion, the biggest ERDF recipient is Poland, with an allocation twice that of the second on the list, Italy. Estonia, Slovakia and Latvia receive the highest ERDF support per capita. It is estimated [25.8-39.9](#) billion will be spent on R&I (figures vary depending on the source).

European Regional Development Fund (ERDF)

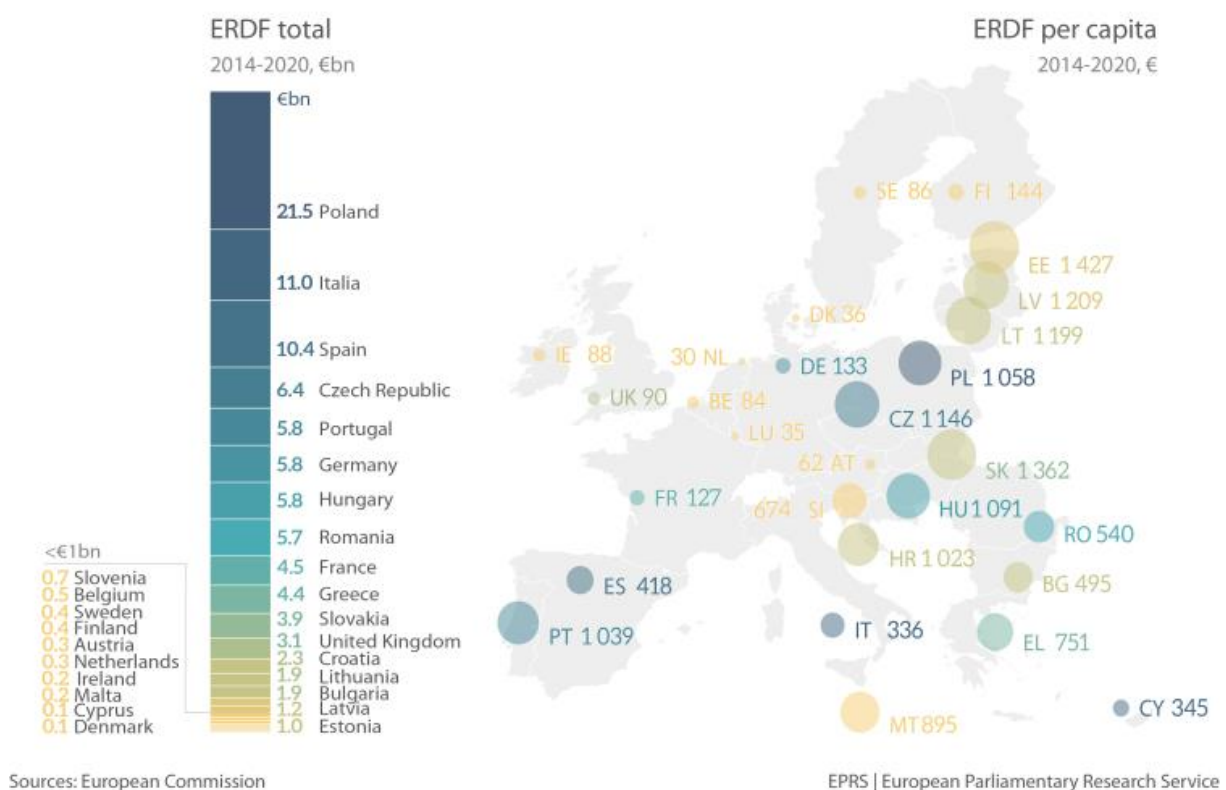


Figure 4. The ERDF allocation per Member State and per capita (2014-2020). Source: [How The EU Budget Is Spent: The European Regional Development Fund, European Parliamentary Research Service Blog](#)

The ERDF/Regional focuses its investments on several key priority areas.

- innovation and research;
- the digital agenda;
- support for SMEs;
- the low-carbon economy.

ERDF/Regional resources allocated to these priorities will depend on the category of region: In more developed regions, at least 80 % of funds must focus on at least two of these priorities, 60 % in transition regions and 50 % in less developed regions. Some priorities have acquired considerable importance. For instance, part of ERDF resources must be channelled specifically towards low-carbon economy projects: 20 % in more developed regions, 15 % in transition regions and 12 % in less developed regions.

2.2 ERDF Funds are distributed through Operational Programmes

The funds are implemented through an Operational Programme (OP). OPs break down the objectives agreed in the Partnership Agreement between the region and the EU into investment priorities and concrete actions. In total there are 175 OPs for the ERDF/Regional, the links to your local OP can be found in the [annex](#).

Calls for applications are published at regular intervals through the lifetime of the programme. Calls will often specify the local growth priorities in a geographic area within the context of the Operational Programme.

Applicants need to make sure that their application is written in the context of the Operational Programme. All projects should provide added value at EU level and address European priorities and policies.

2.3 Smart Specialisation Strategy – Requirement to support R&D under ERDF

In addition to the OP, the use of funds from ERDF/Regional in the field of research and innovation is conditional upon the adoption of a Smart Specialisation Strategy (also known as “RIS3” - research and innovation strategy for smart specialisation) at national or regional level. This strategy sets the priority fields for investment and use of the funds, in connection to local capacities. *For example: MidiPyrénées in France, Andalucía in Spain, and Podkarpackie in Poland selected Aeronautics and Space as a priority in their strategies, given their local industrial capacity in this field. Plant Science example required.*

While Horizon 2020 is based on the pursuit of excellence; the ESI Funds address broader economic, social and territorial development. The link is made through the smart specialisation strategy, for which responsibility is shared between the European Level (Brussels) and the Member States and regional levels.

Smart Specialisation involves a process of identifying the areas of greatest potential in the region, setting priorities and developing policies to maximize the potential of a region, regardless of whether it is strong or weak, high-tech or low-tech.

The RIS3 does not equal the Operational Programme for the implementation of the funding, but is a framework that should guide and align European, national, regional and private investments in the region or member states.

2.3.1 Smart Specialisation Platform for Agri-Food (S3P Agri-Food)

The Smart Specialisation Platform for Agri-Food (S3P Agri-Food) was recently established at [EU level](#) and aims supporting interregional cooperation in thematic areas based on smart specialisation priorities defined by regional and national government linked to agriculture and food. It allows regional stakeholders benefit from cooperation opportunities with partners from other regions.

There is no requirement for direct involvement from Plant Scientists in this initiative; however you may encourage your managing authority to become involved if you see an opportunity to cooperate with another EU region.

The S3P Agri-Food will be co-developed and co-led by the regions themselves with the opportunity for the involvement of clusters of research institutions and academia. There is an [open call](#) for expressions of interest for setting-up and co-leading new partnerships in specific thematic areas related to Agri-Food.

Case Study 1: Potsdam-Golm Science Park, Germany

Established in the mid-1990s, the science park at Golm on the outskirts of Potsdam has grown into the largest and most important research centre in Brandenburg. The science park hosts three Max Planck Institutes, including EPSO Member the [Max Planck Institute for Molecular Plant Physiology](#); two Fraunhofer Gesellschaft Institutes, a business incubation centre called GO:IN and many other innovative enterprises. Founded in 2007, the park provides ideal start-up conditions for entrepreneurs, offering such services as conference rooms and facilities, marketing solutions and coaching expertise. More than 1,300 scientists work at the park, which has benefited from an ERDF contribution of EUR 74.3 million. Since its creation, many joint research projects have been funded under various EU-funded research framework programmes.

[More on Wissenschaftspark Potsdam-Golm.](#)

The case study was adapted from the [Guidance for Beneficiaries of ESIF and Related Instruments.](#)

2.4 Synergies with Horizon 2020

There is currently a significant effort to make ESIF, in particular ERDF/Regional funds, easier to combine with H2020 projects. In the past capacity building in research through ESIF and Horizon 2020 has been problematic due to the difficulty of using them cumulatively. However, it is a mandate of the Juncker Commission to create synergies with Horizon 2020, and there will be an upcoming Commission Communication on Smart Specialisation (including synergies) in 2017. The Commission published a [Synergies Guide](#) in 2014 and a [brochure of practical examples](#) in 2016. A highly practical meeting for National Contact Points was held in Brussels from 11-12 October and all presentations are available [here](#).

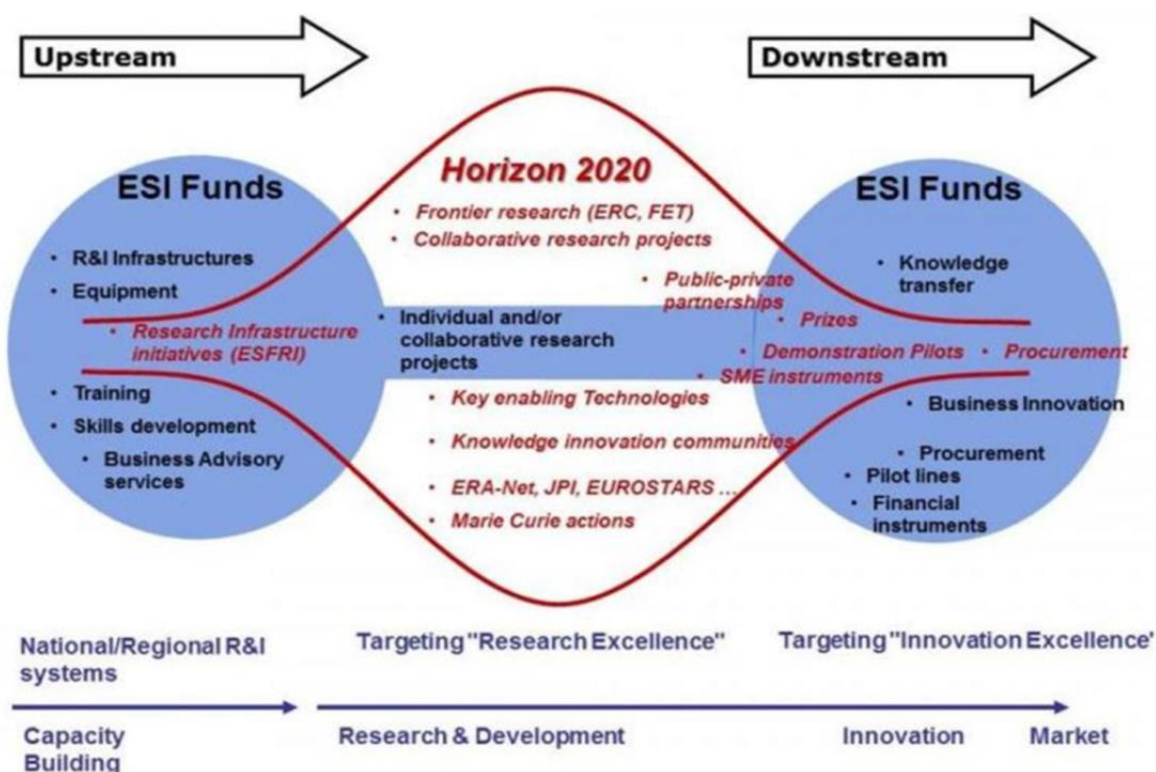


Figure 5. Synergies between Structural Funds and Horizon 2020. Source: [Presentation](#) of Magda De Carli, 11.10.16

Synergies can be achieved through:

- Sequential (or successive) funding that use funds in separate projects built on each other

- Parallel funding that use funds in separate projects complementing each other
- Simultaneous/cumulative funding that brings together Horizon2020 and ESIF funds in the same project aimed at achieving greater impact
- Alternative funding that reorients FP7/Horizon 2020 projects that were positively evaluated, shortlisted, but not funded given the limited budget, towards Structural Funds impact

The European Parliament's [Stairway to Excellence \(S2E\)](#) project aims to enhance synergies through [National policy events](#), [Country & Region Information](#), and [Synergy Examples](#).

Case Study 2: Stairway to Excellence Example of Synergies from an Institute. [Innovative tools against potato blight, Jõgeva Plant Breeding Institute, Estonia.](#)

Researchers in Estonia are used to channel different funding sources, as about 80% of R&D funding is competitive and over 60% of all public sector R&I funding has been financed by Structural Funds. However, long-term project planning involving different funds is not common because of the competitive nature of funds - applicant cannot be sure to get "planned" funds, and one cannot plan to be a partner in a H2020 project if the idea is not ready yet in the head of future coordinator.

Jõgeva Plant Breeding Institute (Jõgeva PBI) is a small public research body which carries out applied and basic studies and breeds new varieties of agricultural crops.

This Institute made use of five projects financed by National funding, ESIF, and the EU Framework Programme (FP), of which Horizon 2020 is the latest edition.

The initial research was started within a FP project and developed through nationally funded research, and led to practical solutions while discussing problems with a potato farmer. It resulted in an ESIF-funded project building agrometeorological automatic weather stations for decision support on potato late blight control and irrigation management. Training and dissemination was created while the knowhow from FP and following Estonian projects were used in the Estonian-Latvian INTERREG project "BALTORGPOTATO" supporting companies with improved and new potato varieties and technologies.

[See the full case study.](#)

2.4.1 Examples of Synergistic Activities Funded through the ERDF from various countries – check the possibilities in your nation/region

A comprehensive workshop on [Synergies between European Structural and Investment Funds \(ESIF\) & Horizon 2020 Research and Innovation Funding](#) took place on 8/3/2017, with presentations representing local managing authorities listing examples of R&I activities funded through the ESIF. All presentations can be accessed on the webpage.

In [Slovenia](#) there is funding allocated for the following schemes:

- An ERC complementary scheme & ERC Fellowship to visit ERC Grantee
- ESFRI & National research infrastructure roadmap
- ERA-NET Cofund
- JPIs
- Widening instruments (teaming, ERA chair)

In [Latvia](#):

- A programme for international cooperation projects in research and innovation (see case study below)
- An applied research programme
- A postdoctoral research programme
- Financing for a H2020 teaming project

In [Estonia](#):

- Financing for H2020 teaming projects
 - o Support for infrastructure and equipment

- Support for human capital, internationalisation and business cooperation
- Financing ERA Chairs H2020 projects
- Support for applicants who achieve high results in ERC evaluation, but who do not receive a positive financing decision (in the amount of national personal grant up to 100 000€ per year, for up to 1.5 years)
- Support for preparing successful applications to Horizon 2020. E.g. trainings and study visits for researchers (to prepare for successful H2020 applications)
- KICs
 - Support for costs that is not covered by H2020

In [Poland](#):

- Synergy with Teaming for Excellence programme in H2020
- Feasibility studies for R&D projects
- Availability of EU R&D&I funds on national and regional level

Case Study 3: Latvian Programme for international cooperation projects in research and innovation – An example of how ERDF could help you finance EPSO membership fees and participation in meetings

The aim of the programme is to promote the participation of Latvian researchers in the European Research Area, thereby promoting international cooperation in research and technology. The programme includes 5m EUR dedicated to Networking activities for institutions to increase the performance in H2020.

Main results of the programme:

- Doubled the number of international partners of Latvian universities
- Supported 458 H2020 project applications evaluated above the quality threshold, representing a two-fold increase for Latvia compared to FP7.

2.4.2 Seal of Excellence extended to Marie Skłodowska-Curie Actions (MSCA) projects

The [Seal of Excellence](#) is a quality label awarded to projects submitted to Horizon 2020 which were deemed to deserve funding but did not receive it due to budget limits. It supports the search for alternative funding (including national/regional authorities through ESIF). In recent years it has been piloted by the EC for SME projects and is now being expanded to other parts of H2020.

In November 2016 the introduction of a Seal of Excellence for MSCA was announced. It will be awarded to proposals under the Individual Fellowships that score at least 85% but for which there is insufficient funding through the MSCA budget. The first Seals were [awarded to 2,300 researchers](#) in April 2017.

Funding bodies at regional or national level will be able, on an entirely voluntary basis, to rely on the MSCA evaluation when considering funding. This [webpage](#) provides regularly updated information about available support at national/regional level for MSCA proposals with a Seal of Excellence.

2.4.3 Challenges and Future Perspectives for synergies between ESIF and H2020

At the workshop on [Synergies between European Structural and Investment Funds \(ESIF\) & Horizon 2020 Research and Innovation Funding](#) on 8/3/2017 a number of challenges for ESIF funds in research were discussed.

This included:

- There is currently a lack of a holistic impact assessment of the efficacy of ESIF funds
- The same state aid rules do not apply to projects positively evaluated in EU-wide competition. There is a requirement to apply State Aid rules to successful H2020 projects if co-funding is provided from ESIF.

- Different financial regulations apply between H2020 and ESIF. It was proposed that the H2020 indirect cost rate of 25% should also apply for ESIF (right now 15% of direct personnel costs).
- There is a considerable increase of administrative burden, delays and implementation risks – both for final beneficiaries and national authorities.
- Legislative uncertainty and inconsistency of audit approaches
- International partners – ESIF has limits for funding outside the programme region
- Double controls and repeated evaluation between ESIF and H2020 projects

3. European Social Fund

The European Social Fund (ESF/Social) is dedicated to supporting employment in the EU, through co-funding national, regional and local projects that improve the levels of employment and quality of jobs. ESF spending amounts to around 10% of the EU's total budget.

The ESF/Social can be used for supporting postgraduate studies, the training of researchers and to support networking between higher education institutions, research institutes and enterprises.

For IT infrastructure, the ESF/Social supports:

- the development of ICT skills and competences in work and ICT in public administrations;
- funds better accessibility, use and quality of information and communication technologies through digital literacy, e-learning, e-inclusion, e-skills and entrepreneurial skills.

A full list of ESF/Social Operational Programmes can be found [here](#). In this section we provide a series of case studies outlining how ESF funding can be used by higher education and research institutions.

Case Study 4: Funds to boost university research in Czech Republic

Universities have been allocated EUR 555 000 000 to fund development and research activities in the Czech Republic.

The funding comes in response to 'A Quadruple Challenge'; this was an open call issued by the Ministry of Education in February 2016. The European Social Fund is contributing EUR 129 629 629. The funding will subsidise a number of projects, ranging from technical fields to the humanities and arts. The largest fund allocation will go to Charles University, which will invest in its medical departments to support biophysics education, health prevention research and burn wounds treatment. Masaryk University will also invest its funds in medical programmes — there are plans to build a simulation centre for doctors in training.

The funding is co-financed by the ESF/Social and the ERDF/Regional.

[Story adapted from the ESF Website.](#)

Case Study 5: Greek farmers and PhD graduates funded to work together

With ESF/Social help over 4900 Greek farmers will be offered support to implement innovative new approaches and ideas in their agricultural activities. Expertise, advice and solutions will come from Greek Institutes of Agricultural Research and in particular from over 150 PhD graduates with experience in R&D and technology transfer.

Each graduate will work with at least 30 individual farmers, offering know-how on new crops, new markets and the latest practices. The objectives of this project are part of Greece's ESF operational programme for human capital.

[Story adapted from the ESF Website.](#) 12/03/2015

Case Study 6: A wider offer for agricultural studies in Croatia

ESF funding is helping to improve the tertiary education system Croatia.

The 'Croatian Qualifications Framework' project has successfully introduced two new vocation and qualification standards into the Croatian education system: Technics and Technology in Agronomy and Environmental Protection and Sustainable Agriculture.

These courses will help to fill the gap in vocational studies in these study areas across Croatia and will help young people to find a job after their studies.

By adding these vocational courses, this ESF-funded project has also helped to improve the education system, which has not been modified since it was part of former Yugoslavia.

[Story adapted from the ESF Website](#). 23/09/2016

In the following example, a Scottish University has combined ERDF/Regional, ESF/Social and FP7 funds:

Case Study 7: Scottish University boosts its research capacity and IT Infrastructure

In past programming periods, ERDF helped the University of the Highlands & Islands (UHI) boost its research capacity and IT Infrastructure, while ESF funding was key for developing their course materials and curriculum to support non-traditional learners. The so-called MERIKA or Marine Energy Research Innovation and Knowledge Accelerator is an ambitious initiative by the UHI, which has transformed the University's faculty of science, health and engineering into a reference research and innovation hub for marine energy. Funded by the 7th Research Framework Programme, predecessor of Horizon 2020, the MERIKA Project runs from 2014 to 2017.

The case study was adapted from the [Guidance for Beneficiaries of ESIF and Related Instruments](#).

Those interested in EU support for higher education may also be interested in the [EPSO briefing on Erasmus+](#).

4. References

- [The Smart Specialisation Platform](#)
- [Enabling synergies between European Structural application: and Investment Funds, Horizon 2020 and other research, innovation and competitiveness-related Union programmes. Guidance for policy-makers and implementing bodies](#)
- [Overview of EU Funds for research and innovation](#), European Parliament
- [Synergies Guide](#)
- ['Agri-Food - Thematic Areas' webpage](#)
- [Information on Funded ERDF Projects](#) (not comprehensive)
- [Stairway to Excellence \(S2E\)](#), European Parliament synergies project
- [Guidance for Beneficiaries of ESIF and Related Instruments](#)
- [How The EU Budget Is Spent: The European Regional Development Fund](#), [European Parliamentary Research Service Blog](#)
- Workshop on [Synergies between European Structural and Investment Funds \(ESIF\) & Horizon 2020 Research and Innovation Funding](#), Brussels 8/3/2017
- [European Innovation Partnership for Agricultural productivity and Sustainability \(EIP-AGRI\)](#)
- [Lifecycle of a Project, 2014-2020 European Structural and Investment Funds Growth Programme](#), UK Government

5. Annex: List of ERDF National and Regional Contacts, links to ERDF and ESF Operational Programmes, and Rural Development Programme

This list was compiled from information extracted and compiled by EPSO in the first half of 2017 from the following EC website: http://ec.europa.eu/regional_policy/en/atlas/managing-authorities/. You may consult this page to further updates to this list by searching for the contact in your region.

Country	Page
Austria	19
Belgium	19
Bulgaria	20
Croatia	21
Cyprus	21
Czech Republic	21
Denmark	22
Estonia	23
Finland	23
France	24
Germany	34
Greece	41
Hungary	46
Ireland	47
Italy	47
Latvia	48
Lithuania	48
Luxembourg	49
Malta	49
Netherlands	50
Poland	51
Portugal	58
Romania	61
Slovakia	62
Slovenia	63
Spain	64
Sweden	72
United Kingdom	73

Austria

ERDF	
Contact	<p>Geschäftsstelle der Österreichischen Raumordnungskonferenz</p> <p>Directors Mag. Johannes Roßbac</p> <p>Ballhausplatz 1 (Hofburg)</p> <p>A-1014 Wien</p> <p>E-mail. : erok@erok.gv.at</p> <p>Web</p>
Operational Programme	<p>Investments in Growth and Employment Austria 2014-2020 - Operational Programme for the use of the ERDF funds</p>
ESF	
Operational Programme Employment Austria 2014-2020 [EN] [DE]	
ERDF	
National Rural Development Programme	

Belgium

ERDF	
OP Brussels Capital Region	
Contact	<p>Gouvernement de la Région de Bruxelles-Capitale</p> <p>Rue Ducale 7-9</p> <p>1000 Bruxelles</p> <p>Tel. : +32/(0)2/506.32.52</p> <p>E-mail. : feder@sprb.irisnet.be</p> <p>Web</p>
OP Wallonia	
Contact	<p>Gouvernement Wallon, Ministre-Président de la Wallonie</p> <p>Rue Mazy, 25-27</p> <p>5100 Namur</p> <p>Tel. : +32 (0)81.331.211</p> <p>E-mail. : christophe.mazza@gov.wallonie.be</p> <p>Web</p>
OP Flanders	
Contact	<p>Vlaamse Beheersautoriteit Europese Structuurfondsen - Agentschap Ondernemen, Afdeling Europa Economie</p> <p>Van Den Stockt, Werner</p> <p>Koning Albert II-laan 35, bus 12</p> <p>1030 Brussel</p> <p>Tel. : 0032 (0)2 553 38 63</p> <p>E-mail. : werner.vandenstockt@agentschapondernemen.be</p> <p>Web</p>
ESF	
ESF Operationnal Programme Wallonie-Bruxelles 2020.eu [EN] [FR] [DE] [NL]	
European Social Fund 2014-2020 – German Speaking Community of Belgium [EN] [FR] [NL] [DE]	
Operational Programme ESF Flanders 2014-2020 [EN] [NL] [FR] [DE]	
Operational programme ESF 2014-2020 of the Brussels-Capital Region : “Investment for growth and jobs” [EN] [FR] [NL] [DE]	
ERDF	

Rural Development Programme - Flanders
Rural Development Programme - Wallonia

Bulgaria

ERDF	
Operational Programme Science and Education for Smart Growth	
Contact	Ministry of Science and Education - General Directorate Structural Funds and Intenational Educational Programmes Tsarigradsko Chausee 125 bl 5/1 Sofia 1113 Tel. : +359 2 46 76 100 Web
Operational programme “Innovations and Competitiveness”	
Contact	Ministry of Economy - European Funds for Competitiveness Directorate General Sofia 21, BG-1000 Sofia Tel. : + 359 2 9329 220 E-mail. : bojidar.loukarsky@mee.government.bg Web
Operational programme “Environment”	
Contact	Ministry of Environment and Water - Directorate General 22, Maria Luiza blvd 1000 Sofia Tel. : +359-2-940 66 88 E-mail. : opec@moew.government.bg Web
Operational programme “Regions in Growth”	
Contact	Ministry of Regional Development and Public Works 17-19 St.St. Kiril i Metodi Str 1202 Sofia Tel. : +359 2 9405 443 E-mail. : DNikolova@mrrb.government.bg Web
ESF	
Operational Programme Science and Education for Smart Growth [EN] [BG]	
EARDF	
National Rural Development Programme	

Croatia

ERDF	
Competitiveness and Cohesion OP	
Contact	<u>Ministry of Regional development and EU Funds,</u> Račkoga 6 HR 10 000 Zagreb Web
ESF	
ESF Operational Programme Efficient Human Resources 2014-2020 [EN] [HR]	
EARDF	
National Rural Development Programme	

Cyprus

ERDF	
Competitiveness and sustainable development	
Contact	<u>Directorate General for European Programmes, Coordination and Development</u> <u>Vyronos 29</u> <u>1096 Nicosia</u> <u>Tel. : 357 22602900</u> Web
ESF	
Employment, Human Capital and Social Cohesion [EN] [EL]	
EARDF	
National Rural Development Programme	

Czech Republic

ERDF	
OP Research, Development and Education	
Contact	<u>Ministry of Education, Youth and Sports</u> Karmelitská 7 118 12 Praha 1 Tel. : +420234811111 Web
Environment	
Contact	<u>Ministry of the Environment of the Czech Republic</u> Vršovická 1442/65 CZ-100 10 Praha 10 Tel. : +420 267 121 111 Web

Technical assistance	
Contact	Ministry for Regional Development of the Czech Republic Staroměstské náměstí 6 110 15 Prague 1 Tel. : +420 224 861 791 E-mail. : info@mmr.cz Web
ESF	
OP Research, Development and Education [EN] [CS]	
Operational Programme Employment [EN] [CS]	
OP Prague – Growth Pole [EN] [CS]	
EARDF	
National Rural Development Programme	

Denmark

ERDF	
Innovation and Sustainable Growth in Businesses. National Programme for the European Regional Fund – 2014-2020	
Contact	Erhvervsstyrelsen, Afdeling for erhvervsudvikling og internationale forhold, Regional erhvervsudvikling Preben Gregersen Vejlsøvej 29 DK-8600 Silkeborg Tel. : +45 35 29 17 00 E-mail. : postru@erst.dk Web
ESF	
Educational and Entrepreneurial Growth [EN] [DA]	
EARDF	
National Rural Development Programme	

Estonia

ERDF & ESF	
Operational Programme for Cohesion Policy Funding 2014-2020	
Contact	<u>Ministry of Finance of the Republic of Estonia</u> Suur-Ameerika 1 Tallinn 15006 Tel. : +372 611 3558 Web
EARDF	
National Rural Development Programme	

Finland

ERDF and ESF	
Sustainable growth and jobs 2014-2020 - Structural Funds Programme of Finland	
Contact	<u>Ministry of Employment and the Economy</u> Aleksanterinkatu 4, Helsinki P.O. Box 32, FI-00023 GOVERNMENT, Finland Tel. : +358 29 516001 E-mail. : kirjaamo@tem.fi Web
EARDF	
National Rural Development Programme	

Åland

ERDF and ESF	
Entrepreneurship and skills, Åland Structural Fund Programme 2014-2020 [EN] [FI] [SV]	
Contact	<u>Department of Trade and Industry, Åland Government</u> Självstyrelsegården / P.O. Box 1060 AX-22111 Mariehamn, Åland Tel. : +358 (0)18 25 000 Web
EARDF	
Rural Development Programme	

France

National technical assistance programme 2014-2020 [\[EN\]](#) [\[FR\]](#)

ESF
National Operational Programme ESF Employment and Social Inclusion 2014-2020 [EN] [FR]
EARDF
National Rural Development Programme

Bourgogne

ERDF	
Regional programme Bourgogne 2014-2020	
Contact	Regional Council of Bourgogne 17, boulevard de la Trémouille CS 23502 – 21035 Dijon Cedex Tel. : +33 3 80 44 33 00 Web
ESF	
Regional programme Bourgogne 2014-2020 [EN] [FR]	
EARDF	
Rural Development Programme	

Languedoc-Roussillon

ERDF	
Regional programme Languedoc-Roussillon 2014-2020	
Contact	<u>Conseil régional du Languedoc-Roussillon</u> Claude Cougnenc 201 avenue de la Pompignane F-34064 Montpellier cedex 02 Tel. : +33 (0) 4 67 22 80 00 Web
ESF	
Regional programme Languedoc-Roussillon 2014-2020 [EN] [FR]	
EARDF	
Rural Development Programme	

Franche-Comté et Jura

ERDF	
Regional programme Franche-Comté et Jura 2014-2020	
Contact	<u>Conseil régional de Franche-Comté</u> Gilles Da Costa 4 square Castan - CS 51857 25031 Besançon Cedex Tel. : +33 (0) 3 81 61 61 61 E-mail. : info@franche-comte.fr Web
ESF	
Regional programme Franche-Comté et Jura 2014-2020 [EN] [FR]	
EARDF	
Rural Development Programme	

Auvergne

ERDF	
Regional programme Auvergne 2014-2020	
Contact	<u>Regional Council of Auvergne</u> F. Müller 59 Boulevard Léon Jouhaux - CS 90706 63050 Clermont-Ferrand Tel. : +33 4 73 31 85 85 Web
ESF	
Regional programme Auvergne 2014-2020 [EN] [FR]	
EARDF	
Rural Development Programme	

Limousin

ERDF	
Regional programme Limousin 2014-2020	
Contact	<u>Conseil régional du Limousin</u> 27, boulevard de la Cordière 87031 Limoges Cedex 1 Tel. : + 33 (0) 5.55.45.19.00 Web
ESF	
EARDF	
Rural Development Programme	

Guadeloupe

ERDF	
Regional programme Guadeloupe Conseil Régional 2014-2020	
Contact	<u>Conseil Régional de Guadeloupe</u> Rue Paul Lacave - PETIT PARIS 97109 BASSE TERRE CEDEX Tel. : +590 (0) 590 80 40 40 Web
ESF	
Regional programme Guadeloupe Conseil Régional 2014-2020 [EN] [FR]	
EARDF	
Rural Development Programme	

Nord-Pas de Calais

ERDF	
Regional programme Nord-Pas de Calais 2014-2020	
Contact	<u>Conseil régional Nord-Pas-de-Calais</u> 151, Avenue du Président Hoover F-59555 LILLE Cedex Tel. : +33 (0)3.28.82.82.82 Web
ESF	
Regional programme Nord-Pas de Calais 2014-2020 [EN] [FR]	
EARDF	
Rural Development Programme	

National technical assistance programme

EARDF	
National technical assistance programme 2014-2020	
Contact	<u>Commissariat général à l'égalité des territoires (CGET) - Site Pleyel</u> 5, rue Pleyel 93283 Saint Denis cedex Tel. : 01 49 17 46 46 Web

Guyane

ERDF	
Regional programme Guyane Conseil Régional 2014-2020	
Contact	<u>Conseil régional de Guyane</u> 4179 route de Montabo BP 7025 97307 CAYENNE Cedex Tel. : +594 594 29 20 20 Web
ESF	
Operational Programme ESF Guyane Etat 2014-2020 [EN] [FR] Regional programme Guyane Conseil Régional 2014-2020 [EN] [FR]	
EARDF	
Rural Development Programme	

Mayotte

ERDF	
Regional programme Mayotte 2014-2020	
Contact	<u>Préfecture of Mayotte</u> Avenue de la Préfecture BP 676 Kawéni 97600 Mamoudzou Tel. : +262 2.69.63.50.00 Web
ESF	
Regional programme Mayotte 2014-2020 [EN] [FR]	
EARDF	
Rural Development Programme	

Alpes Côte d'Azur

ERDF	
Regional programme Provence Alpes Côte d'Azur 2014-2020	
Contact	<u>Regional Council of Provence-Alpes-Côte d'Azur</u> 27 place Jules-Guesde 13481 Marseille Cedex 20 Tel. : +33 (0)4.91.57.50.57 Web
ESF	
Regional programme Provence Alpes Côte d'Azur 2014-2020 [EN] [FR]	
EARDF	
Rural Development Programme	

Centre

ERDF	
Regional programme Centre 2014-2020	
Contact	Conseil régional Centre Laurent Olivier 9 rue Saint Pierre-Lentin 45041 Orléans Cedex 1 Tel. : 00 33 2 38 70 34 48 E-mail. : Laurent.OLIVIER@regioncentre.fr Web
ESF	
Regional programme Centre 2014-2020 [EN] [FR]	
EARDF	
Rural Development Programme	

Midi-Pyrénées et Garonne

ERDF	
Regional programme Midi-Pyrénées et Garonne 2014-2020	
Contact	Conseil régional Midi-Pyrénées 22, boulevard du Maréchal-Juin F- 31406 Toulouse Cedex 9 Tel. : +33 (0)5 61 33 50 50 Web
ESF	
Regional programme Midi-Pyrénées et Garonne 2014-2020 [EN] [FR]	
EARDF	
Rural Development Programme	

Guadeloupe et St Martin Etat

ERDF and ESF	
Operational Programme ERDF-ESF Guadeloupe et St Martin Etat 2014-2020	
Contact	Prefet de la Guadeloupe ou son représentant (SGAR) Palais d'Orléans, Rue Larenoy 97109 Basse-Terre Cedex Tel. : 005 90 590 99 28 28 E-mail. : cellule.europe@guadeloupe.pref.gouv.fr Web
EARDF	
Rural Development Programme	

Basse-Normandie

ERDF	
Regional programme Basse-Normandie 2014-2020	
Contact	<u>Conseil Régional Basse-Normandie</u> Abbaye aux Dames, Place Reine-Mathilde, CS 50523 F - 14035 Caen Cedex 1 Tel. : +33 (0)2 31 06 89 36 Web
ESF	
Regional programme Basse-Normandie 2014-2020 [EN] [FR]	
EARDF	
Rural Development Programme	

Ile-de-France

ERDF and ESF	
Operational Programme ERDF-ESF ile-de-France et Seine 2014-2020	
Contact	<u>Région Ile-de-France</u> 33, rue Barbet de Jouy 75007 Paris Tel. : +33 1 53 85 61 29
EARDF	
Rural Development Programme	

Bretagne

ERDF	
Regional programme Bretagne 2014-2020	
Contact	<u>Conseil Régional de Bretagne</u> 5-9 rue Martenot 35000 Rennes Tel. : +33 (0)2 99 27 18 00 Web
ESF	
Regional programme Bretagne 2014-2020 [EN] [FR]	
EARDF	
Rural Development Programme	

Pays de la Loire

ERDF	
Regional programme Pays de la Loire 2014-2020	
Contact	<u>Conseil Régional du Pays de la Loire</u> 1, rue de la Loire F-44966 Nantes Cedex 9 Tel. : + 33 2 28 20 50 00 Web
ESF	
Regional programme Pays de la Loire 2014-2020 [EN] [FR]	
EARDF	
Rural Development Programme	

Picardie

ERDF	
Regional programme Picardie 2014-2020	
Contact	<u>Conseil Régional de Picardie</u> Marielle PIERDET-SOUVERAIN 15, Mail Albert 1er 80000 Amiens Tel. : +33 (0)3.22.97.16.71 Web
ESF	
Regional programme Picardie 2014-2020 [EN] [FR]	
EARDF	
Rural Development Programme	

Haute-Normandie

ERDF	
Regional programme Haute-Normandie 2014-2020	
Contact	<u>Conseil régional Haute-Normandie</u> Monique Hanoteaux 5 rue Robert Schuman - CS 21129 F-76174 ROUEN Cedex Tel. : +33 (0)2 35 52 56 00 E-mail. : monique.hanoteaux@hautenormandie.fr Web
ESF	
Regional programme Haute-Normandie 2014-2020 [EN] [FR]	
EARDF	
Rural Development Programme	

Corse

ERDF	
Regional programme Corse 2014-2020	
Contact	<u>Collectivité territoriale de Corse</u> 22, cours Grandval BP 215 - 20187 Ajaccio cedex 1 Tel. : +33 (0)4 95 51 64 64 Web
ESF	
Regional programme Corse 2014-2020 [EN] [FR]	
EARDF	
Rural Development Programme	

Aquitaine

ERDF	
Regional programme Aquitaine 2014-2020	
Contact	<u>Regional Council of Aquitaine</u> Jean-Baptiste Fauroux 14 Rue François de Sourdis 33000 Bordeaux Tel. : +33 5 57 57 80 00 E-mail. : jean-baptiste.fauroux@aquitaine.fr Web
ESF	
Regional programme Aquitaine 2014-2020 [EN] [FR]	
EARDF	
Rural Development Programme	

Martinique

ERDF	
Regional programme Martinique Conseil Régional 2014-2020	
Contact	<u>Conseil régional de Martinique</u> Rue Gaston-Deferre 97200 Fort-de-France Tel. : +596 5 96 59 63 00 Web
ESF	
Regional programme Martinique Conseil Régional 2014-2020 [EN] [FR]	
EARDF	
Rural Development Programme	

Poitou Charentes

ERDF	
Regional programme Poitou Charentes 2014-2020	
Contact	<u>Conseil Régional de Poitou-Charentes</u> 15 rue de l'ancienne comédie BP 575, 86021 Poitiers Cedex Tel. : +33 (0)5 49 55 77 00 Web
ESF	
Regional programme Poitou Charentes 2014-2020 [EN] [FR]	
EARDF	
Rural Development Programme	

Lorraine et Vosges

ERDF	
Regional programme Lorraine et Vosges 2014-2020	
Contact	<u>Conseil régional de Lorraine</u> Place Gabriel Hocquard F-57036 METZ Cedex 01 Tel. : Tél : +33 (0)3.87.33.60.00 Web
ESF	
Regional programme Lorraine et Vosges 2014-2020 [EN] [FR]	
EARDF	
Rural Development Programme	

Rhône Alpes

ERDF	
Regional programme Rhône Alpes 2014-2020	
Contact	<u>Conseil Régional Rhône-Alpes</u> 1, esplanade François Mitterrand CS 20033 – 69269 Lyon Cedex 02 Tel. : +33 (0) 4 26 73 40 00 Web
ESF	
Regional programme Rhône Alpes 2014-2020 [EN] [FR]	
EARDF	
Rural Development Programme	

Champagne-Ardenne

ERDF	
Regional programme Champagne-Ardenne 2014-2020	
Contact	<u>Regional Council of Champagne Ardenne</u> 5, Boulevard de Jéricho 51037 – Chalons-en-Champagne Tel. : +33 3 26703131 Web
ESF	
Regional programme Champagne-Ardenne 2014-2020 [EN] [FR]	
EARDF	
Rural Development Programme	

Massif Central

ERDF	
Interregional programme Massif Central 2014-2020	
Contact	<u>Groupeement d'Intérêt Public (G.I.P) pour le développement du Massif Central</u> 59, boulevard Léon-Jouhaux F- 63050 Clermont-Ferrand Cedex 2 Tel. : 00 33 (0)4 73 31 85 46 Web
EARDF	
Rural Development Programme	

Réunion

ERDF	
Interregional programme Réunion Conseil Régional 2014-2020	
Contact	<u>Conseil Régional de La Réunion</u> Avenue René Cassin Moufia B.P 7190 97719 SAINT DENIS MESSAG CEDEX 9 Tel. : +33 002 62 48 70 00 Web
ESF	
Operational Programme ESF Réunion Etat 2014-2020 [EN] [FR]	
EARDF	
Rural Development Programme	

Alsace

ERDF

Interregional programme Alsace 2014-2020	
Contact	Regional Council of Alsace 1 place Adrien ZELLER, BP 91006 67070 STRASBOURG CEDEX Tel. : +33 (0) 3 88 15 68 67 Web
ESF	
Operational Programme ESF Alsace 2014-2020 [EN] [FR]	
ERDF	
Rural Development Programme	

Germany

National Programmes

ESF	
Operational Programme ESF Federal Germany 2014-2020 [EN] [DE]	
ERDF	
National Rural Network Programme	

Niedersachsen

ERDF & ESF	
OP Niedersachsen ERDF/ESF 2014-2020	
Contact	Niedersächsische Staatskanzlei - Referat 403 Herr Jens Palandt Planckstraße 2 30169 Hannover Tel. : 0511 -120-8466 Web

Berlin

ERDF	
OP Berlin ERDF 2014-2020	
Contact	<u>Senatsverwaltung für Wirtschaft, Technologie und Forschung, Referat IV C - Europäische Strukturfondsförderung</u> Herr Pierre Triantaphyllides Martin-Luther-Straße 105 10820 Berlin Tel. : (030) 9013-0 E-mail. : pierre.triantaphyllides@senwtf.berlin.de Web
ESF	
Operational Programme ESF Berlin 2014-2020 [EN] [DE]	
EARDF	
Rural Development Programme Berlin and Brandenburg	

Saarland

ERDF	
OP Saarland ERDF 2014-2020	
Contact	EFRE-Verwaltungsbehörde Ministerium für Wirtschaft, Arbeit, Energie und Verkehr Frau Beate Sehn Franz-Josef-Röder-Straße 17 D-66119 SAARBRÜCKEN Tel. : +49 681 501 1659 E-mail. : b.sehn@wirtschaft.saarland.de Web
ESF	
Operational Programme ESF Saarland 2014-2020 [EN] [DE]	
EARDF	
Rural Development Programme	

Bremen

ERDF	
OP Bremen ERDF 2014-2020	
Contact	<u>Der Senator für Wirtschaft, Arbeit und Häfen der Freien Hansestadt Bremen</u> <u>Referat Z3</u> Thomas Schwender Zweite Schlachtpforte 3 D - 28195 Bremen Tel. : +49 (0)421 361 2574 Web
ESF	
Operational Programme ESF Bremen 2014-2020 [EN] [DE]	
EARDF	
Rural Development Programme - Lower Saxony and Bremen	

Sachsen

ERDF	
OP Sachsen ERDF 2014-2020	
Contact	<p>Sächsisches Staatsministerium für Wirtschaft, Arbeit und Verkehr - Referat 55 Verwaltungsbehörde Sachsen für den EFRE Wilhelm-Buck-Straße 2 DE-01097 Dresden Tel. : +49 351 564-8047 E-mail. : Andrea.Decker@smwa.sachsen.de Web</p>
ESF	
Operational Programme ESF Sachsen 2014-2020 [EN] [DE]	
EARDF	
Rural Development Programme	

Sachsen-Anhalt

ERDF	
OP Sachsen-Anhalt ERDF 2014-2020	
Contact	<p>Ministerium der Finanzen des Landes Sachsen-Anhalt, EU-Verwaltungsbehörde Editharing 40 39108 Magdeburg Tel. : +49 391 567-1481 E-mail. : Thorsten.Kroll@sachsen-anhalt.de Web</p>
ESF	
Operational Programme ESF Sachsen-Anhalt 2014-2020 [EN] [DE]	
EARDF	
Rural Development Programme	

Brandenburg

ERDF	
OP Brandenburg ERDF 2014-2020	
Contact	<p>Ministry of Economic Affairs and Energy of the State of Brandenburg Ms Vera Viehrig Heinrich-Mann-Allee 107 D-14473 Potsdam Tel. : +49 331-8661713 E-mail. : vera.viehrig@mwe.brandenburg.de Web</p>
ESF	
Operational Programme ESF Brandenburg 2014-2020 [EN] [DE]	
EARDF	
Rural Development Programme Berlin and Brandenburg	

Bayern

ERDF	
OP Bayern ERDF 2014-2020	
Contact	<u>Bayerisches Staatsministerium für Wirtschaft und Medien, Energie und Technologie</u> EFRE-Verwaltungsbehörde Fabian Kyrein Prinzregentenstraße 28 80538 München Tel. : +49 89 2162-2585 E-mail. : infoefre@stmwi.bayern.de Web
ESF	
Operational Programme ESF Bayern 2014-2020 [EN] [DE]	
EARDF	
Rural Development Programme	

Bayern

ERDF	
OP Bayern ERDF 2014-2020	
Contact	<u>Bayerisches Staatsministerium für Wirtschaft und Medien, Energie und Technologie</u> EFRE-Verwaltungsbehörde Fabian Kyrein Prinzregentenstraße 28 80538 München Tel. : +49 89 2162-2585 E-mail. : infoefre@stmwi.bayern.de Web
ESF	
Operational Programme ESF Bayern 2014-2020 [EN] [DE]	
EARDF	
Rural Development Programme	

Schleswig-Holstein

ERDF	
OP Schleswig-Holstein ERDF 2014-2020	
Contact	<u>Ministerium für Wirtschaft, Arbeit, Verkehr und Technologie des Landes Schleswig-Holstein Referat VII 21 Regional- und Strukturpolitik, EFRE, GRW, EU-Angelegenheiten</u> Herr Rüdiger Balduhn Postfach 7128 D-24171 Kiel Tel. : +49 431 988-4526 E-mail. : ruediger.balduhn@wimi.landsh.de Web
ESF	
OP Schleswig-Holstein ESF 2014-2020 [EN] [DE]	
EARDF	
Rural Development Programme	

Thüringen

ERDF	
OP Thüringen ERDF 2014-2020	
Contact	<u>Thüringer ministerium für wirtschaft, wissenschaft und digitale gesellschaft - Referat 34 Verwaltungsbehörde und Bescheinigungsbehörde EFRE</u> Max-Reger-Str. 4-8 99096 Erfurt Tel. : +49 (0)361 37-973 50 E-mail. : Volker.Kurz@tmwwdg.thueringen.de Web
ESF	
Operational Programme ESF Thüringen 2014-2020 [EN] [DE]	
EARDF	
Rural Development Programme	

Mecklenburg-Vorpommern

ERDF	
OP Mecklenburg-Vorpommern ERDF 2014-2020	
Contact	Ministerium für Wirtschaft, Bau und Tourismus Referat 350 EFRE-Fondsverwaltung/-steuerung Eva-Maria Flick Johannes-Stelling-Str. 14 19053 Schwerin Tel. : +49 0385-588 5350 E-mail. : e.flick@wm.mv-regierung.de Web
ESF	
Operational Programme ESF Mecklenburg-Vorpommern 2014-2020 [EN] [DE]	
EARDF	
Rural Development Programme	

Rheinland-Pfalz

ERDF	
OP Rheinland-Pfalz ERDF 2014-2020	
Contact	Referat Europäische Strukturpolitik (EFRE, INTERREG A) Ministerium für Wirtschaft, Verkehr, Landwirtschaft und Weinbau RHEINLAND-PFALZ Beatrice Lerch Stiftsstraße 9 55116 Mainz Tel. : 06131/16-2284 E-mail. : Beatrice.Lerch@mwwlw.rlp.de Web
ESF	
Operational Programme ESF Rheinland-Pfalz 2014-2020 [EN] [DE]	
EARDF	
Rural Development Programme	

Hessen

ERDF	
OP Hessen ERDF 2014-2020	
Contact	EFRE - Verwaltungsbehörde Hessen - Ministerium für Wirtschaft, Energie, Verkehr und Landesentwicklung Kaiser-Friedrich-Ring 75 65185 Wiesbaden Tel. : +49 611 815-2470 E-mail. : holger.haubfleisch@wirtschaft.hessen.de Web
ESF	
Operational Programme ESF Hessen 2014-2020 [EN] [DE]	
EARDF	
Rural Development Programme	

Baden-Württemberg

ERDF	
OP Baden-Württemberg ERDF 2014-2020	
Contact	Ministerium für Ländlichen Raum und Verbraucherschutz Baden-Württemberg Referat 40 EFRE Dr. Georg Ris Kernerplatz 10 D-70182 Stuttgart Tel. : +49 711 126 22 41 E-mail. : Georg.Ris@MLR.BWL.DE Web
ESF	
Operational Programme ESF Baden-Württemberg 2014-2020 [EN] [DE]	
EARDF	
Rural Development Programme	

Nordrhein-Westfalen

ERDF	
OP Nordrhein-Westfalen ERDF 2014-2020	
Contact	Ministerium für Wirtschaft, Energie, Industrie, Mittelstand und Handwerk des Landes Nordrhein-Westfalen Verwaltungsbehörde EFRE.NRW Berger Allee 25 40213 Düsseldorf Tel. : +49 211 61772-202 E-mail. : verwaltungsbehoerde@efre.mweimh.nrw.de Web
ESF	
Operational Programme ESF Nordrhein-Westfalen 2014-2020 [EN] [DE]	
EARDF	
Rural Development Programme	

Hamburg

ERDF	
OP Hamburg ERDF 2014-2020	
Contact	Freie und Hansestadt Hamburg - Behörde für Wirtschaft, Verkehr und Innovation, EFRE-Verwaltungsbehörde, Referat WF 4 Dr. Julia Friedland Alter Steinweg 4 D-20459 Hamburg Tel. : +49 40 42841-1315 E-mail. : Julia.Friedland@bwvi.hamburg.de Web
ESF	
Operational Programme ESF Hamburg 2014-2020 [EN] [DE]	

Greece

Technical Assistance

ERDF Technical Assistance	
Technical Assistance Programme	
Contact	Special Managing Authority for the Operational Programme "Technical Assistance" Mitropoleos 3, 10557 Athes GR o Tel. : + 30 210 3742001 E-mail. : eyssaap@mnec.gr Web

Operational Programme "Competitiveness, Entrepreneurship and Innovation" 2014-2020

ERDF	
COMPETITIVENESS, ENTREPRENEURSHIP AND INNOVATION OP	
Contact	Special Managing Authority for the Operational Programme "Competitiveness, Entrepreneurship and Innovation" 2014-2020 56 Mesogion Ave., 11527, Athens, Greece Tel. : (0030) 801 11 36 300 Web
ESF	
COMPETITIVENESS, ENTREPRENEURSHIP AND INNOVATION OP [EN] [EL]	

Human Resources Development, Education and Lifelong Learning

ESF	
Human Resources Development, Education and Lifelong Learning [EN] [EL]	

Ionian Islands

ERDF	
IONIAN ISLANDS OP	
Contact	Special Managing Authority for the Operational Programme 'Ionian Islands Ethikis Pal/tsas, Alykes Potamou 491 00 Kerkyra Tel. : + 30 26613 60002 Web
ESF	
IONIAN ISLANDS OP [EN] [EL]	
EARDF	
National Rural Development Programme	

EASTERN MACEDONIA-THRACE

ERDF	
EASTERN MACEDONIA-THRACE OP	
Contact	<u>Managing Authority for the OP</u> Irodou 28, GR-69 100 Komotini Tel. : +30 25313 52338 Web
ESF	
EASTERN MACEDONIA-THRACE OP [EN] [EL]	
EARDF	
National Rural Development Programme	

Peloponnesus

ERDF	
PELOPONNESUS OP	
Contact	<u>Special Managing Authority for the Operational Programme 'Peloponnesus</u> Pl. Ethnarxou Makariou 491 00 Tripoli Tel. : + 30 2713601346 Web
ESF	
PELOPONNESUS OP [EN] [EL]	
EARDF	
National Rural Development Programme	

North Aegean

ERDF	
NORTH AEGEAN OP	
Contact	<u>Special Managing Authority for the Operational Programme 'North Aegean</u> 1st Km Mytilini-Loutra 81100 Mytiline Tel. : + 30 22513-52000 Web
ESF	
NORTH AEGEAN OP [EN] [EL]	
EARDF	
National Rural Development Programme	

Continental Greece

ERDF	
CONTINENTAL GREECE OP	
Contact	<u>Special Managing Authority for the Operational Programme 'Continental Greece' 2014-2020</u> Ipsilanti 12 35100, Lamia Tel. : + 30 22313 50900 Web
ESF	
CONTINENTAL GREECE OP [EN] [EL]	
EARDF	
National Rural Development Programme	

Attica

ERDF	
ATTICA OP	
Contact	<u>Intermediate Managing Authority of the Region of Attica</u> Sygrou Avenue 98-100 117 41, Athens Tel. : + 30 2131501500 Web
ESF	
ATTICA OP [EN] [EL]	
EARDF	
National Rural Development Programme	

Crete

ERDF	
CRETE OP	
Contact	<u>Special Managing Authority for the Operational Programme 'Crete</u> Bofor Doukos 7 71202, Iraklio Tel. : + 30 2813404500 Web
ESF	
CRETE OP [EN] [EL]	
EARDF	
National Rural Development Programme	

South Aegean

ERDF	
SOUTH AEGEAN OP	
Contact	Special Managing Authority for the Operational Programme 'South Aegean' Saki Karagiorga 22 841 00 Ermoupoli, Syros Tel. : + 30 2281-360800 Web
ESF	
SOUTH AEGEAN OP [EN] [EL]	
EARDF	
National Rural Development Programme	

Thessaly

ERDF	
THESSALY OP	
Contact	Special Managing Authority for the Operational Programme 'Thessaly' 2014-2020 Sokratous 111 41336, Larissa Tel. : + 30 2413 505100 Web
ESF	
THESSALY OP [EN] [EL]	
EARDF	
National Rural Development Programme	

Epirus

ERDF	
EPIRUS OP	
Contact	Special Managing Authority for the Operational Programme 'Epirus' 2014-2020 Plateia Pirrou 1 45221, Ioannina Tel. : + 30 26513 60500 Web
ESF	
EPIRUS OP [EN] [EL]	
EARDF	
National Rural Development Programme	

Central Macedonia

ERDF	
CENTRAL MACEDONIA OP	
Contact	<u>Managing Authority for the OP 'Central Macedonia</u> Georgikis Scholis 65, GR-57001 Pylaia, Thessaloniki Tel. : Tel: +302313321710 Web
ESF	
CENTRAL MACEDONIA OP [EN] [EL]	
EARDF	
National Rural Development Programme	

WESTERN MACEDONIA

ERDF	
WESTERN MACEDONIA OP	
Contact	<u>Managing Authority for the OP</u> <u>Dioikitirio ZEP,</u> GR-501 00 Kozani Tel. : +30 24613 50948 Web
ESF	
EARDF	
National Rural Development Programme	

Western Greece

ERDF	
WESTERN GREECE OP	
Contact	<u>Special Managing Authority for the Operational Programme 'Western Greece</u> NEO Patrwn Athinwn 28 264 41, Patrao Tel. : + 30 2613611400 Web
ESF	
WESTERN MACEDONIA OP [EN] [EL]	
ERDF	
National Rural Development Programme	

Hungary

ERDF	
Economic Development and Innovation Operational Programme	
Contact	<u>Ministry of National Economy, Managing Authority for Regional Development Programmes</u> József nádor 1051 Budapest Tel. : +36-1-795-1400 Web
Environmental and Energy Efficiency OP	
Contact	<u>Ministry of National Development, Deputy State Secretariat for Environment and Energy Efficiency Operational Programmes</u> Váci út 45 H-1134 Budapest Tel. : +36 1 238 6600
Human Resources Development Operational Programme	
Contact	<u>Ministry of Human Capacities</u> Akadémia u. 3. 1054 Budapest Tel. : +36-1-795-1200 Web
Danube	
Contact	<u>Ministry for National Economy, Danube Transnational Programme Managing Authority and Joint Secretariat</u> Honvéd street 13-15 H– 1051, Budapest Tel. : +36 1 795 9193 E-mail. : danube@interreg-danube.eu Web
ESF	
Competitive Central-Hungary OP [EN] [HU] Economic Development and Innovation Operational Programme [EN] [HU] Human Resources Development Operational Programme [EN] [HU]	
EARDF	
National Rural Development Programme	

Ireland

ERDF	
Border, Midland and Western Regional Operational Programme 2014-2020	
Contact	<p>Border, Midland and Western Regional Assembly The Square, Ballaghaderreen, Co. Roscommon, Ireland Tel. : +353 94 9862970 E-mail. : info@bmwassembly.ie Web</p>
Southern & Eastern Regional Operational Programme	
Contact	<p>Southern & Eastern Regional Assembly Assembly House, O'Connell Street Waterford, Ireland Tel. : +353 051 860700 E-mail. : info@seregassembly.ie Web</p>
ESF	
ESF Operational Programme 2014-2020 [EN]	
EARDF	
National Rural Development Programme	

Italy

ERDF	
National Operational Programme on Research and Innovation	
Contact	<p>Direzione Generale per il Coordinamento, la Promozione Direzione Generale per il Coordinamento, la Promozione Via Michele Carcani, 61 00153 - Roma E-mail. : segreteria.adg@miur.it Web</p>
National Operational Programme on Education	
Contact	<p>MIUR - Dipartimento per la Programmazione e la gestione delle risorse umane, finanziarie e strumentali – Ufficio IV Programmazione e gestione dei fondi Viale Trastevere, 76/a I-00187 ROMA Tel. : +39 06 58492953-3405-2770 Web</p>
National Operational Programme on Infrastructures and Networks	

Contact	<u>Ministero delle Infrastrutture e dei Trasporti - Direzione Generale per lo Sviluppo del territorio, Sistemi informativi e statistici:Divisione II - Programmi europei e nazionali per le reti e la mobilità</u> Via Nomentana, 2 00161 Roma Web
ESF	
<ul style="list-style-type: none"> National Operational Programme on Education [EN] [IT] National Operational Programme on Research and Innovation [EN] [IT] 	
EARDF	
National Rural Development Programme	

Latvia

ERDF	
Growth and Employment	
Contact	<u>Latvijas Republikas Finanšu ministrija</u> Smilšu iela 1, Rīga LV-1919, Latvia Tel. : +371-67095405 E-mail. : pasts@fm.gov.lv Web
ESF	
Growth and Employment [EN] [LV]	
EARDF	
National Rural Development Programme	

Lithuania

ERDF	
Operational Programme for EU Structural Funds Investments for 2014-2020	
Contact	Finansų ministerija Lukiškių g. 2, LT- 01512 Vilnius Tel. : +370 5 2194 437 Web
ESF	
Operational Programme for EU Structural Funds Investments for 2014-2020 [EN] [LT]	
EARDF	
National Rural Development Programme	

Luxembourg

ERDF	
Operational Programme ERDF Luxembourg 2014-2020	
Contact	<u>La Direction de la politique régionale du Ministère de l’Economie et du Commerce extérieur</u> 19-21, boulevard Royal L-2449 Luxembourg Tel. : (+352) 247-84325 Web
ESF	
Operational Programme ESF 2014-2020 [EN] [FR] [DE]	
EARDF	
National Rural Development Programme	

Malta

ERDF	
Fostering a competitive and sustainable economy to meet our challenges	
Contact	<u>Planning and priorities Coordination Division (PPCD) – Ministry for European Affairs and the Implementation of the Electoral Manifesto</u> Triq il-Kukkanja MT-SVR 1411 Valletta Tel. : +356 22001142 E-mail. : info.ppcd@gov.mt Web
ESF	
Investing in human capital to create more opportunities and promote the wellbeing of society [EN] [MT]	
EARDF	
National Rural Development Programme	

Netherlands

ERDF	
OP North Netherlands ERDF 2014-2020	
Contact	<p><u>Samenwerkingsverband Noord Nederland</u> Postbus 779 9700 AT Groningen Tel. : 00 31 50 52 24 900 Web</p>
OP East Netherlands ERDF 2014-2020	
Contact	<p><u>Province of Gelderland</u> Huis der Provincie, Markt 11 6811 CG Arnhem Tel. : 00 31 26 359 91 85 E-mail. : opoost@gelderland.nl Web</p>
OP West Netherlands ERDF 2014-2020	
Contact	<p><u>City of Rotterdam</u> Wilhelminakade 179 3072AP Rotterdam Web</p>
OP South Netherlands ERDF 2014-2020	
Contact	<p><u>Province of Noord-Brabant Provinciehuis</u> Brabantlaan 1 5216 TV 's-Hertogenbosch Tel. : 00 31 73 681 28 12 Web</p>
ESF	
Operational Programme ESF 2014-2020 [EN] [NL]	
EARDF	
National Rural Development Programme	

Poland

National Level

ERDF	
OP Technical Assistance	
Contact	<u>Ministry of Infrastructure and Development</u> ul. Wspólna 2/4 00-926 Warszawa Tel. : +48 22 273 78 00 Web
OP Digital Poland	
Contact	<u>Ministerstwo Infrastruktury i Rozwoju Departament Rozwoju Cyfrowego</u> ul. Wspólna 2/4 00-926 Warszawa Tel. : +48 22 273 75 00/01 E-mail. : sekretariatDRC@mir.gov.pl Web
OP Smart growth	
Contact	<u>Ministerstwo Infrastruktury i Rozwoju - Departament Konkurencyjności i Innowacyjności</u> ul. Wspólna 2/4 00-926 Warszawa Tel. : (22) 273 81 01 E-mail. : sekretariatDKI@mir.gov.pl Web
OP Infrastructure and Environment	
Contact	<u>Ministry of Infrastructure and Development</u> ul. Wspólna 2/4 00-926 Warsaw Tel. : +48 22 273 78 00 Web
ESF	
OP Knowledge Education Growth [EN] [PL]	
EARDF	
National Rural Development Programme	

Kujawsko-Pomorskie Voivodeship 2014-2020

ERDF	
ROP 2 Regional Operational Programme for Kujawsko-Pomorskie Voivodeship 2014-2020	
Contact	<u>Council of the Kujawsko-Pomorskie voivodship - Marshal's Office of the Kujawsko-Pomorskie voivodship</u> Piotr, Calbecki Plac Teatralny 2 PL-87-100 Torun Tel. : +48 56 62 23 131 E-mail. : marszalek@kujawsko-pomorskie.pl Web
ESF	
ROP 2 Regional Operational Programme for Kujawsko-Pomorskie Voivodeship 2014-2020 [EN] [PL]	

Warmińsko-Mazurskie Voivodeship

ERDF	
ROP 14 Regional Operational Programme for Warmińsko-Mazurskie Voivodeship	
Contact	<u>Zarząd Województwa Warmińsko-Mazurskiego</u> ul. Emilii Plater 1 PL - 10-562 Olsztyn Tel. : +48 521 90 00 Web
ESF	
ROP 14 Regional Operational Programme for Warmińsko-Mazurskie Voivodeship [EN] [PL]	

Zachodniopomorskie Voivodeship

ERDF	
ROP 16 Regional Operational Programme for Zachodniopomorskie Voivodeship	
Contact	<u>Zarząd Województwa Zachodniopomorskiego</u> Ul. Korsarzy 34 70-540 Szczecin Web
ESF	
ROP 16 Regional Operational Programme for Zachodniopomorskie Voivodeship [EN] [PL]	

Mazowieckie Voivodeship

ERDF	
ROP 7 Regional Operational Programme for Mazowieckie Voivodeship 2014-2020	
Contact	<u>Zarząd Województwa Mazowieckiego</u> ul. Jagiellońska 26 03-719 Warszawa Tel. : (+48 22) 5979-100 E-mail. : urząd_marszałkowski@mazovia.pl Web
ESF	
ROP 7 Regional Operational Programme for Mazowieckie Voivodeship 2014-2020 [EN] [PL]	

Podkarpackie Voivodeship

ERDF	
ROP 9 Regional Operational Programme for Podkarpackie Voivodeship	
Contact	<u>Zarząd Województwa Podkarpackiego</u> Al. Łukasza Cieplińskiego 4 35-010 Rzeszów E-mail. : marszalek@podkarpackie.pl Web
ESF	
ROP 9 Regional Operational Programme for Podkarpackie Voivodeship [EN] [PL]	

Podlaskie Voivodeship

ERDF	
ROP 10 Regional Operational Programme for Podlaskie Voivodeship	
Contact	<u>Urząd Marszałkowski Województwa Podlaskiego</u> Ul. Kardynała Stefana Wyszyńskiego 1 15-888 Białystok Tel. : +48 85 66 54 549 E-mail. : kancelaria@wrotapodlasia.pl Web
ESF	
ROP 10 Regional Operational Programme for Podlaskie Voivodeship [EN] [PL]	

Małopolskie Voivodeship

ERDF	
ROP 6 Regional Operational Programme for Małopolskie Voivodeship 2014-2020	
Contact	<u>Zarząd Województwa Małopolskiego, Departament Zarządzania Programami Operacyjnymi</u> ul. Basztowa 22 31 156 Krakow Web
ESF	
ROP 6 Regional Operational Programme for Małopolskie Voivodeship 2014-2020 [EN] [PL]	

Pomorskie Voivodeship

ERDF	
ROP 11 Regional Operational Programme for Pomorskie Voivodeship	
Contact	<u>Urząd Marszałkowski Województwa Pomorskiego</u> Ul. Okopowa 21/27 80-810 GDAŃSK Web
ESF	
ROP 11 Regional Operational Programme for Pomorskie Voivodeship [EN] [PL]	

Lubelskie Voivodeship

ERDF	
ROP 3 Regional Operational Programme for Lubelskie Voivodeship 2014-2020	
Contact	<u>Zarząd Województwa Lubelskiego</u> ul. Spokojna 4 20-074 Lublin Tel. : 0048.81. 44.16.738 E-mail. : marszalek@lubelskie.pl , drpo@lubelskie.pl Web
ESF	
ROP 3 Regional Operational Programme for Lubelskie Voivodeship 2014-2020 [EN] [PL]	

Świętokrzyskie Voivodeship

ERDF	
ROP 13 Regional Operational Programme for Świętokrzyskie Voivodeship	
Contact	<u>Board of the Świętokrzyskie Voivodeship</u> Urząd Marszałkowski Województwa Świętokrzyskiego - al. IX Wieków Kielc 3 25-516 Kielce Web
ESF	
ROP 13 Regional Operational Programme for Świętokrzyskie Voivodeship [EN] [PL]	

Wielkopolskie Voivodeship

ERDF	
ROP 15 Regional Operational Programme for Wielkopolskie Voivodeship	
Contact	<u>Zarząd Województwa Wielkopolskiego</u> al. Niepodległości 18 PL - 61-713 Poznań Tel. : 0048 61 626 66 66 E-mail. : kancelaria@umww.pl Web
ESF	
ROP 15 Regional Operational Programme for Wielkopolskie Voivodeship [EN] [PL]	

Śląskie Voivodeship

ERDF	
ROP 12 Regional Operational Programme for Śląskie Voivodeship	
Contact	<u>Zarząd Województwa Śląskiego</u> Ul. Ligonía 46 40-037 Katowice Tel. : +48 32 207 82 90 E-mail. : marszal@slaskie.pl Web
ESF	
ROP 12 Regional Operational Programme for Śląskie Voivodeship [EN] [PL]	

Opolskie Voivodeship

ERDF	
ROP 8 Regional Operational Programme for Opolskie Voivodeship	
Contact	<u>Board of the Opolskie Voivodeship</u> ul. Piastowska 14 45-082 Opole Tel. : +48 35 46 64 07 Web
ESF	
ROP 8 Regional Operational Programme for Opolskie Voivodeship [EN] [PL]	

Eastern Poland

ERDF	
OP Development of Eastern Poland	
Contact	<u>Ministry of Infrastructure and Development</u> ul. Wspólna 2/4 00-926 Warsaw Tel. : +48 22 273 78 00 Web

Dolnośląskie Voivodeship

ERDF	
ROP 1 Regional Operational Programme for Dolnośląskie Voivodeship 2014-2020	
Contact	<u>Urząd Marszałkowski Województwa Dolnośląskiego</u> dr Maciej Zathey, Director Wybrzeże Słowackiego 12-14 50-411 Wrocław E-mail. : maciej.zathey@umwd.pl Web
ESF	
ROP 1 Regional Operational Programme for Dolnośląskie Voivodeship 2014-2020 [EN] [PL]	

Łódzkie Voivodeship

ERDF	
ROP 5 Regional Operational Programme for Łódzkie Voivodeship 2014-2020	
Contact	<u>Zarząd Województwa Łódzkiego obsługiwany przez Urząd Marszałkowski Województwa Łódzkiego Departament Polityki Regionalnej</u> al. Piłsudskiego 8 90-051 Łódź Tel. : +48 42 663 30 92 E-mail. : pr@lodzkie.pl Web
ESF	
ROP 5 Regional Operational Programme for Łódzkie Voivodeship 2014-2020 [EN] [PL]	

Lubuskie Voivodeship

ERDF	
ROP 4 Regional Operational Programme for Lubuskie Voivodeship 2014-2020	
Contact	<u>URZĄD MARSZAŁKOWSKI WOJEWÓDZTWA LUBUSKIEGO</u> ul. Podgórna 7 65 - 057 Zielona Góra Tel. : +48 68 45 65 200 E-mail. : kancelaria.ogolna@lubuskie.pl Web
ESF	
ROP 4 Regional Operational Programme for Lubuskie Voivodeship 2014-2020 [EN] [PL]	

Portugal

National Level

ERDF	
Competitiveness and Internationalisation OP	
Contact	<p><u>Autoridade de Gestão do Programa Operacional Competitividade e Internacionalização</u> c/o Agência para o Desenvolvimento e Coesão Avenida 5 de Outubro, n° 153 1050-053 LISBOA Tel. : 00351 218 814 000 E-mail. : duarte.rodrigues@adcoesao.pt Web</p>
Sustainability and Resource Use Efficiency OP	
Contact	<p><u>PO SEUR</u> Av. Columbano Bordalo Pinheiro, 5 1099-019 Lisboa Tel. : (+351) 211 545 000 E-mail. : poseur@poseur.portugal2020.pt Web</p>
OP Technical Assistance	
Contact	<p><u>Autoridade de Gestão do Programa Operacional Assistência Técnica 2014-2020</u> <u>Agência para o Desenvolvimento e Coesão, IP</u> Avenida 5 de outubro, 153 P-1050-053 Lisboa Tel. : +351 218 814 000 Web</p>
ESF	
<ul style="list-style-type: none"> • Competitiveness and Internationalisation OP [EN] [PT] • OP Human Capital [EN] [PT] • OP Social Inclusion and Employment [EN] [PT] 	
ERDF	
National Rural Development Programme	

Algarve

ERDF	
Regional OP Algarve	
Contact	<u>Comissão de Coordenação e Desenvolvimento Regional do Algarve</u> Praça da Liberdade, 2 P 8000-164 FARO Tel. : +351 289 895 200 E-mail. : geral@ccdr-alg.pt Web
ESF	
Regional OP Algarve [EN] [PT]	

Alentejo

ERDF	
Regional OP Alentejo	
Contact	<u>Comissão de Coordenação e Desenvolvimento Regional do Alentejo</u> Avenida Engenheiro Arantes e Oliveira, 193 P-7004-514 Évora Tel. : +351 266 740 300 Web
ESF	
Regional OP Alentejo [EN] [PT]	

Azores

ERDF	
Regional OP Azores (Autonomous Region)	
Contact	<u>REGIÃO AUTÓNOMA DOS AÇORES Direção Regional do Planeamento e Fundos Estruturais</u> Caminho do Meio, 58 São Carlos 9701-853 Angra do Heroísmo
ESF	
Regional OP Azores (Autonomous Region) [EN] [PT]	
EARDF	
Rural Development Programme	

Centro

ERDF	
Regional OP Centro	
Contact	<u>Comissão de Coordenação e Desenvolvimento Regional do Centro</u> Rua Bernardim Ribeiro, 80 P - 3000-069 Coimbra Tel. : +351 239 400 100 Web
ESF	
Regional OP Centro [EN] [PT]	

Madeira

ERDF	
Regional OP Madeira (Autonomous Region)	
Contact	<u>Instituto de Desenvolvimento Regional</u> Travessa do Cabido, 16 9000-715 FUNCHAL E-mail. : idr.srpf@gov-madeira.pt
ESF	
Regional OP Madeira (Autonomous Region) [EN] [PT]	
EARDF	
Rural Development Programme	

Norte

ERDF	
Regional OP Norte	
Contact	<u>Comissão de Coordenação e Desenvolvimento Regional do Norte</u> Rua Rainha D. Estefânia n. ° 251 P- 4150-304 Porto Web
ESF	
Regional OP Norte [EN] [PT]	

Lisboa

ERDF	
Regional OP Lisboa	
Contact	<u>Autoridade de Gestão do Programa Operacional Regional de Lisboa 2014-2020</u> Rua Alexandre Herculano, 37 P-1250-009 Lisboa Tel. : +351 213 837 100 Web
ESF	
Regional OP Lisboa [EN] [PT]	

Atlantic Area

ERDF	
Atlantic Area	
Contact	<u>Comissão de Coordenação e Desenvolvimento Regional do Norte (CCDR-N)</u> Rua Rainha D. Estefânia, 251 4150-034 Porto Tel. : +351 226 086 300 E-mail. : atlantico.ag@ccdr-n.pt Web

Romania

ERDF	
Regional Operational Programme	
Contact	<u>Autoritatea de Management POR - Ministerul Dezvoltarii Regionale și Administrației Publice</u> Str. Apolodor nr. 17 București, Sector 5 Tel. : (+40 37) 211 14 09 E-mail. : info@mdrap.ro Web
Technical Assistance Operational Programme	
Contact	<u>Ministerul Fondurilor Europene - Autoritatea de Management POAT 2014-2020.</u> <u>Dmna Gabriela Teletin</u> Ms Luciana Cututiu Bd. Ion Mihalache, nr 15-17, Tower Center. București Web

Large Infrastructure Operational Programme	
Contact	Ministerul Fondurilor Europene - Autoritatea de Management LIOP Bd. Ion Mihalache, nr 15-17, Tower Center București Web
Competitiveness Operational Programme	
Contact	Ministerul Fondurilor Europene - Autoritatea de Management POC 2014-2020 Ms Ioana Iulia Baz Bd. Ion Mihalache, nr 15-17, Tower Center București Web
ESF	
<ul style="list-style-type: none"> Operational Programme Administrative Capacity [EN] [RO] Operational Programme Human Capital [EN] [RO] 	
EARDF	
National Rural Development Programme	

Slovakia

ERDF	
Research and Innovation	
Contact	Ministerstvo školstva, vedy, výskumu a športu Slovenskej republiky Peter Viglaš Hanulova 5/B 813 30 Bratislava Tel. : +421-2-59374561 E-mail. : sekretariat.ssfeu@minedu.sk Web
Integrated Regional Operational Programme	
Contact	Ministry of Agriculture and Rural Development of the Slovak Republic Prievozská 2/B 825 25 Bratislava 26 Tel. : +421 2 5831 7242 Web
Operational Programme Human Resources	

Contact	<u>Ministry of Labour, Social Affairs and Family</u> Špitálska 4, 6, 8 816 43 Bratislava Tel. : 02/ 2046 0000 Web
Integrated Infrastructure	
Contact	<u>Ministry of Transport, Construction and Regional Development of SR</u> Denisa Zilakova Námestie slobody č. 6 810 05 Bratislava Tel. : +421 25949 4111 E-mail. : denisa.zilakova@mindop.sk Web
Quality of Environment	
Contact	<u>Ministry of Environment of the Slovak Republic</u> Martin Huska Namestie L. Stura 1 812 35 Bratislava Tel. : +421 2 5956 2350 E-mail. : martin.huska@enviro.gov.sk Web
ESF	
<ul style="list-style-type: none"> Operational Programme Effective Public Administration [EN] [SK] Operational Programme Human Resources [EN] [SK] 	
EARDF	
National Rural Development Programme	

Slovenia

ERDF	
Operational Programme for the Implementation of the EU Cohesion Policy in the period 2014 – 2020	
Contact	<u>Republic of Slovenia Government Office for Development and European Cohesion Policy</u> Kotnikova 5 SI-1000 Ljubljana Tel. : +386 1 400 36 80 E-mail. : gp.svrk@gov.si Web
ESF	
Operational Programme for the Implementation of the EU Cohesion Policy in the period 2014 – 2020 [EN] [SL]	

ERDF
National Rural Development Programme

Spain

Andalucía

ERDF	
Andalucía ERDF 2014-20 OP	
Contact	<u>Ministerio de Hacienda y Administraciones Públicas - Subdirección General de Administración del FEDER</u> Paseo de la Castellana, 162 28071 MADRID Tel. : +34 91 58 35 223 Web
ESF	
OP ESF 2014 C.A. ANDALUCIA [EN] [ES]	
ERDF	
Rural Development Programme	

Galicia

ERDF	
Galicia ERDF 2014-20 OP	
Contact	<u>Ministerio de Hacienda y Administraciones Públicas - Subdirección General de Gestión del FEDER</u> Paseo de la Castellana, 162 28071 MADRID Tel. : +3491 583 52 23 Web
ESF	
OP ESF 2014 C.A. GALICIA [EN] [ES]	
ERDF	
Rural Development Programme	

Smart growth

ERDF	
Smart growth ERDF 2014-20 OP	
Contact	<u>Ministerio de Hacienda y Administraciones Públicas - Subdirección General de Gestión del FEDER</u> Paseo de la Castellana, 162 28071 MADRID Tel. : +3491 583 52 23 Web

Cantabria

ERDF	
Cantabria ERDF 2014-20 OP	
Contact	<u>Ministerio de Hacienda y Administraciones Públicas - Subdirección General de Gestión del FEDER</u> Paseo de la Castellana, 162 28071 MADRID Tel. : +3491 583 52 23 Web
ESF	
OP ESF 2014 C.A. CANTABRIA [EN] [ES]	
EARDF	
Rural Development Programme	

Ceuta

ERDF	
Ceuta ERDF 2014-20 OP	
Contact	<u>Ministerio de Hacienda y Administraciones Públicas - Subdirección General de Administración del FEDER</u> Paseo de la Castellana, 162 28071 MADRID Tel. : +34 91 583 52 23 Web
ESF	
OP ESF 2014 CIUDAD A. DE CEUTA [EN] [ES]	

Cataluña

ERDF	
Cataluña ERDF 2014-20 OP	
Contact	<u>Ministerio de Hacienda y Administraciones Públicas - Subdirección General de Gestión del FEDER</u> <u>Paseo de la Castellana, 162</u> <u>28071 MADRID</u> <u>Tel. : +3491 583 52 23</u> Web
ESF	
PO FSE 2014 C.A. CATALUÑA [EN] [ES]	
EARDF	
Rural Development Programme	

La Rioja

ERDF	
La Rioja ERDF 2014-20 OP	
Contact	<u>Ministerio de Hacienda y Administraciones Públicas - Subdirección General de Gestión del FEDER</u> <u>Paseo de la Castellana, 162</u> <u>28071 MADRID</u> <u>Tel. : +3491 583 52 23</u> Web
ESF	
OP ESF 2014 C.A. LA RIOJA [EN] [ES]	
EARDF	
Rural Development Programme	

Castilla-La Mancha

ERDF	
Castilla-La Mancha ERDF 2014-20 OP	
Contact	<u>Ministerio de Hacienda y Administraciones Públicas - Subdirección General de Gestión del FEDER</u> <u>Paseo de la Castellana, 162</u> <u>28071 MADRID</u> <u>Tel. : +3491 583 52 23</u> Web
ESF	

OP ESF 2014 C.A. CASTILLA-LA MANCHA [EN] [ES]
EARDF
Rural Development Programme

País Vasco

ERDF	
País Vasco ERDF 2014-20 OP	
Contact	<u>Ministerio de Hacienda y Administraciones Públicas - Subdirección General de Gestión del FEDER</u> Paseo de la Castellana, 162 28071 MADRID Tel. : +3491 583 52 23 Web
ESF	
OP ESF 2014 C.A. PAIS VASCO [EN] [ES]	
EARDF	
National Rural Development Programme	

Murcia

ERDF	
Murcia ERDF 2014-20 OP	
Contact	<u>Ministerio de Hacienda y Administraciones Públicas - Subdirección General de Gestión del FEDER</u> Paseo de la Castellana, 162 28071 MADRID Tel. : +3491 583 52 23 Web
ESF	
OP ESF 2014 REGION DE MURCIA [EN] [ES]	
EARDF	
Rural Development Programme	

Castilla y León

ERDF	
Castilla y León ERDF 2014-20 OP	

Contact	<u>Ministry of Finance and Public Administration - Subdirectorato-General for ERDF Administration</u> <u>Paseo de la Castellana, 162</u> <u>28071 Madrid</u> <u>Tel. : +34 91 583 52 23</u> Web
ESF	
PO FSE 2014 C.A. CASTILLA Y LEON [EN] [ES]	
EARDF	
Rural Development Programme	

Melilla

ERDF	
Melilla ERDF 2014-20 OP	
Contact	<u>Ministerio de Hacienda y Administraciones Públicas - Subdirección General de Administración del FEDER</u> <u>Paseo de la Castellana, 162</u> <u>28071 MADRID</u> <u>Tel. : +34 91 583 52 23</u> Web
ESF	
OP ESF 2014 CIUDAD A. DE MELILLA [EN] [ES]	

Madrid

ERDF	
Madrid ERDF 2014-20 OP	
Contact	<u>Ministerio de Hacienda y Administraciones Públicas -Subdirección General de Administración del FEDER</u> <u>Paseo de la Castellana, 162</u> <u>28071 MADRID</u> <u>Tel. : +34 91 583 52 23</u> Web
ESF	
OP ESF 2014 C. DE MADRID [EN] [ES]	
EARDF	
Rural Development Programme	

Extremadura

ERDF	
Extremadura ERDF 2014-20 OP	
Contact	<u>Ministerio de Hacienda y Administraciones Públicas - Subdirección General de Administración del FEDER</u> Paseo de la Castellana, 162 28071 MADRID Tel. : +34 91 58 35 223 Web
ESF	
OP ESF 2014 C.A. EXTREMADURA [EN] [ES]	
EARDF	
Rural Development Programme	

Baleares

ERDF	
Baleares ERDF 2014-20 OP	
Contact	<u>Ministerio de Hacienda y Administraciones Públicas - Subdirección General de Administración del FEDER</u> Paseo de la Castellana, 162 28071 MADRID Tel. : +34 91 583 52 23 Web
ESF	
OP ESF 2014 ILLES BALEARS [EN] [ES]	
EARDF	
Rural Development Programme	

Aragón

ERDF	
Aragón ERDF 2014-20 OP	
Contact	<u>Ministerio de Hacienda y Administraciones Públicas -Subdirección General de Administración del FEDER</u> Paseo de la Castellana, 162 28071 MADRID Tel. : +34 91 583 52 23 Web
ESF	
OP ESF 2014 C.A. ARAGON [EN] [ES]	

EARDF
Rural Development Programme

Sustainable growth

ERDF	
Sustainable growth ERDF 2014-20 OP	
Contact	<u>Ministerio de Hacienda y Administraciones Pública - Subdirección General de Administración del FEDER</u> Paseo de la Castellana, 162 28071 MADRID Tel. : +34 91 583 52 23 Web

Asturias

ERDF	
Asturias ERDF 2014-20 OP	
Contact	<u>Ministry of Finance and Public Administration - Subdirectorato-General for ERDF Administration</u> Paseo de la Castellana, 162 28071 Madrid Tel. : + 34 91 583 52 23 Web
ESF	
OP ESF 2014 PRINCIPADO DE ASTURIAS [EN] [ES]	
EARDF	
Rural Development Programme	

Canary Islands

ERDF	
Canary Islands ERDF 2014-20 OP	
Contact	<u>Ministerio de Hacienda y Administraciones Públicas - Subdirección General de Administración del FEDER</u> Paseo de la Castellana, 162 28071 MADRID Tel. : +34 91 58 35 223 Web
ESF	
OP ESF 2014 C.A. CANARIAS [EN] [ES]	

ERDF
Rural Development Programme

Comunidad Valenciana

ERDF	
Comunidad Valenciana ERDF 2014-20 OP	
Contact	<u>Ministerio de Hacienda y Administraciones Públicas - Subdirección General de Administración del FEDER</u> Paseo de la Castellana, 162 28071 MADRID Tel. : +34 91 583 52 23 Web
ESF	
OP ESF 2014 COMUNITAT VALENCIANA [EN] [ES]	
ERDF	
Rural Development Programme	

Navarra

ERDF	
Navarra ERDF 2014-20 OP	
Contact	<u>Ministerio de Hacienda y Administraciones Públicas - Subdirección General de Gestión del FEDER</u> Paseo de la Castellana, 162 28071 MADRID Tel. : +3491 583 52 23 Web
ESF	
OP ESF 2014 C. FORAL DE NAVARRA [EN] [ES]	
ERDF	
Rural Development Programme	

Other ESF	
<ul style="list-style-type: none"> • OP ESF 2014 EMPLOYMENT, TRAINING AND EDUCATION [EN] [ES] • OP ESF 2014 SOCIAL INCLUSION AND SOCIAL ECONOMY [EN] [ES] • OP ESF 2014 TECHNICAL ASSISTANCE [EN] [ES] • OP ESF 2014 YOUTH EMPLOYMENT [EN] [ES] 	

National Rural Development Programme:

- [Full textSearch for available translations of the preceding linkES•••](#)
- [Factsheet Search for available translations of the preceding linkEN•••](#)
- [SummarySearch for available translations of the preceding linkEN•••](#)
- [Press releaseSearch for available translations of the preceding linkEN•••](#)

Sweden

ERDF	
National regional fund programme for investments in growth and jobs 2014-2020	
Contact	<p>Tillväxtverket Box 4044 SE - 10261 Stockholm Tel. : +46 8 681 91 00 E-mail. : tillvaxtverket@tillvaxtverket.se Web</p>
ESF	
<ul style="list-style-type: none"> • Community-led local development programme with support from ERDF and ESF 2014-2020 [EN] [SV] • National Operational Programme ESF for investments in growth and employment 2014 – 2020 [EN] [FI] [SV] 	
EARDF	
National Rural Development Programme	

United Kingdom

ERDF	
United Kingdom - ERDF England	
Contact	<p><u>Department for Communities and Local Government - ERDF Programmes</u> https://www.gov.uk/european-st ERDF Programmes London, SW1P 4DF Tel. : +44 303 444 6508 E-mail. : esif@communities.gov.uk Web</p>
United Kingdom - ERDF Scotland	
Contact	<p><u>Scottish Government</u> 3rd Floor, 5 Atlantic Quay 150 Broomielaw Glasgow G2 8LU Tel. : +44 300 244 1289 E-mail. : Future_funds_2020@scotland.gsi.gov.uk Web</p>
United Kingdom - ERDF Northern Ireland	
Contact	<p><u>European Support Unit Department of Enterprise, Trade & Investment</u> Massey Avenue Belfast, BT4 2JP Tel. : +44 28 905 29479 Web</p>
United Kingdom - ERDF West Wales and The Valleys	
Contact	<p><u>Welsh European Funding Office</u> Welsh Government, Rhydycar, CF48 1UZ Merthyr Tydfil Tel. : +44 845 010 3355 E-mail. : enquiries-wefo@wales.gsi.gov.uk Web</p>
United Kingdom - ERDF East Wales	
Contact	<p><u>Welsh European Funding Office</u> Welsh Government, Rhydycar, CF48 1UZ Merthyr Tydfil Tel. : +44 845 010 3355 E-mail. : enquiries-wefo@wales.gsi.gov.uk Web</p>

ESF
<ul style="list-style-type: none"> • ESF England [EN] • ESF Gibraltar [EN] • ESF Northern Ireland [EN] • ESF Scotland (incl. YEI) [EN] • United Kingdom - ESF East Wales [EN] • United Kingdom - ESF West Wales and the Valleys [EN]
EARDF
<ul style="list-style-type: none"> • England • Northern Ireland • Scotland • Wales